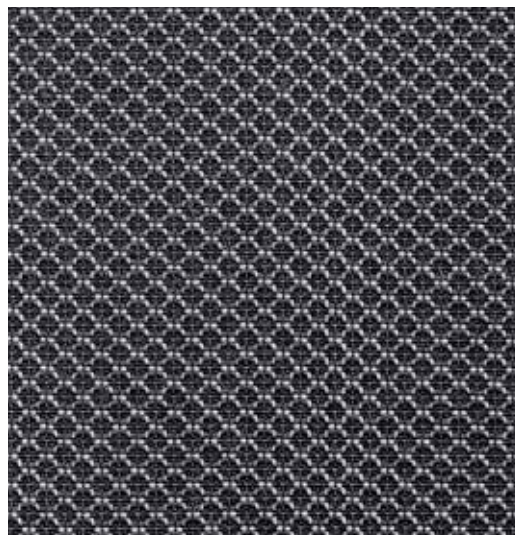
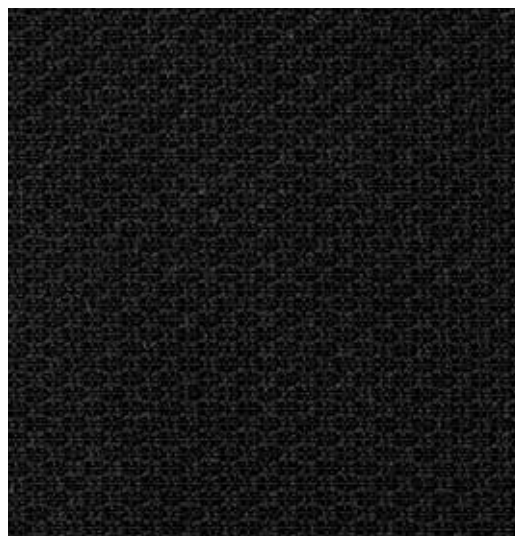


Strong ESD



491 030-931



491 030-999

# Strong ESD



## Design

Climatex

## Farben – Colors – Colori – Couleur

2

## Punkt-zu-Punkt-Widerstand – Resistance point to point – Resistenza punto a punto – Resistance point à point

DIN EN 61340-5-1

Diagonal  $5.8 \times 10^4 \Omega$ , Directione longitudinale  $3.6 \times 10^3 \Omega$

## Material – Composition – Composizione – Composition

66 % Cradura™, PA

16 % Certified Virgin Wool, WV

10 % Redesigned Lenzing FR™, CV FR

6 % PES

2 % Steel

## Nutzbreite – Nominal Width – Larghezza utilizzabile – Largeur utile

141 cm

## Gewicht – Weight – Peso – Poids

445 g/lfm

## Scheuerfestigkeit – Abrasion resistance – Resistenza all'abrasione – Résistance à l'abrasion

150'000 Martindale, EN ISO 12947-2

## Pilling – Résistance au boulochage

4, EN ISO 12945-2

## Lichtechtheit – Light fastness – Solidità alla luce – Stabilité aux UV

6 - 7, EN ISO 105-B02

## Reibechtheit – Fastness to rubbing – Resistenza allo sfregamento – Résistance au frottement

dry 4 - 5, wet 4 - 5, EN ISO 105-X12

## Brandnormen – Fire standards – Norme antincendio – Normes incendie

EN 1021-1/2

BS 5852-0/1

California TB 117, Class 1

## Pflege – Care – Cura – Conseil d'entretien

