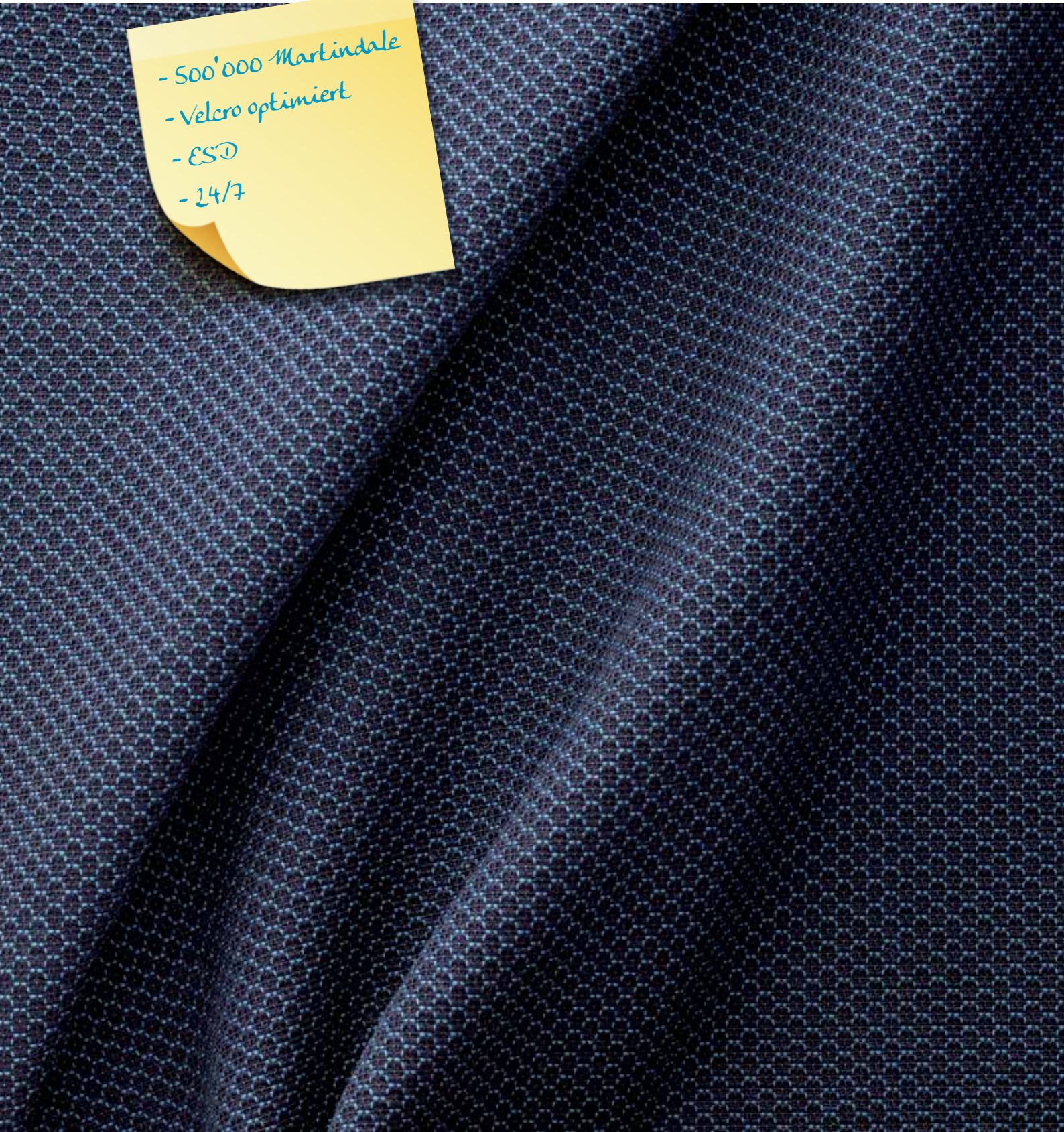


Steel

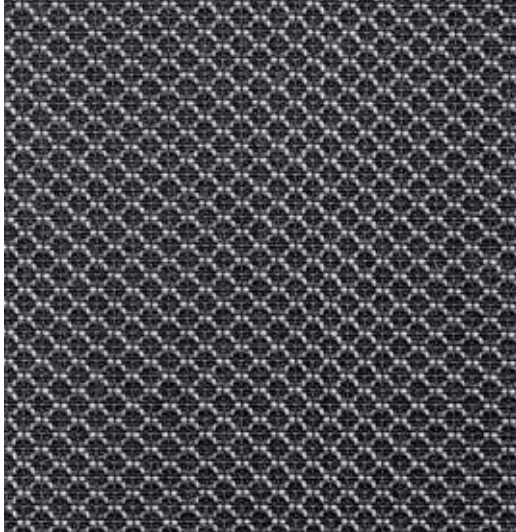
 climatex®

- 500'000 Martindale
- Velcro optimiert
- ESD
- 24/7

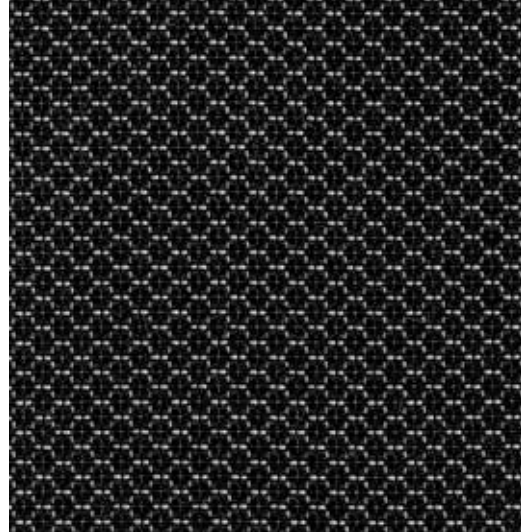


Steel

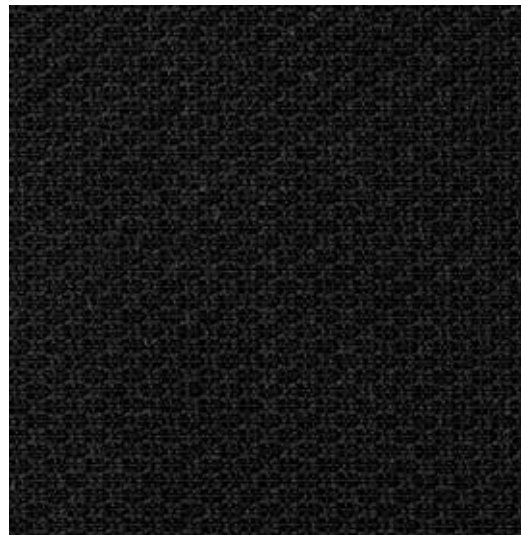
 climatex®



491 053-931



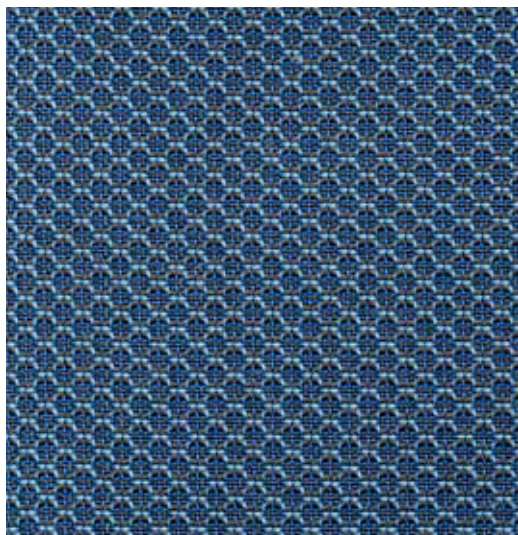
491 053-993



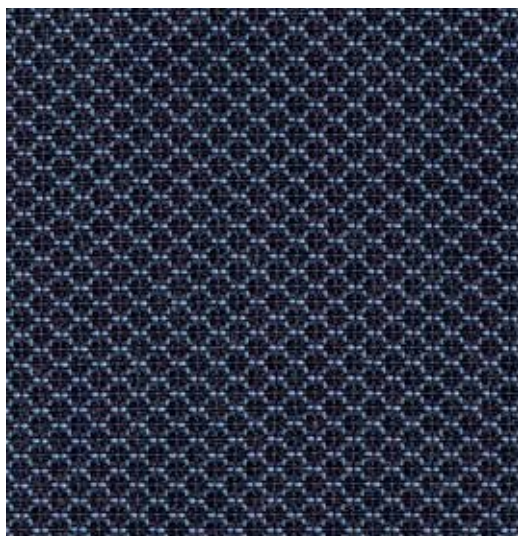
491 053-999

Steel

 climatex®



491 053-916



491 053-586



491 053-995

Steel

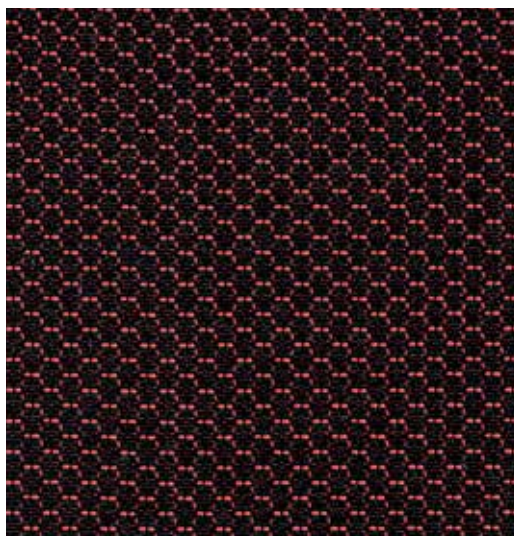
 climatex®



491 053-932



491 053-991



491 053-992

Steel



Design

Climatex

Farben – Colors – Colori – Couleur

9

Punkt-zu-Punkt-Widerstand – Resistance point to point – Resistenza punto a punto – Resistance point à point

DIN EN 61340-5-1

DIN EN 61340-2-3

Diagonal $5.6 \times 10^4 \Omega$, Directione longitudinale $8.3 \times 10^4 \Omega$

Material – Composition – Composizione – Composition

62 % Cradura™, PA

14 % Certified Virgin Wool, WV

10 % Redesigned Lenzing FR™, CV FR

11 % PES

3 % Steel

Nutzbreite – Nominal Width – Larghezza utilizzabile – Largeur utile

141 cm

Gewicht – Weight – Peso – Poids

452 g/lfm

Scheuerfestigkeit – Abrasion resistance – Resistenza all'abrasione – Résistance à l'abrasion

500'000 Martindale, EN ISO 12947-2

Pilling – Résistance au boulochage

4 - 5, EN ISO 12945-2

Lichtechtheit – Light fastness – Solidità alla luce – Stabilité aux UV

6 - 7, EN ISO 105-B02

Reibechtheit – Fastness to rubbing – Resistenza allo sfregamento – Résistance au frottement

dry 4 - 5, wet 4 - 5, EN ISO 105-X12

Brandnormen – Fire standards – Norme antincendio – Normes incendie

EN 1021-1/2

BS 5852-0/1

California TB 117, Class 1

Pflege – Care – Cura – Conseil d'entretien

