

Picto

 climatex[®]



Picto

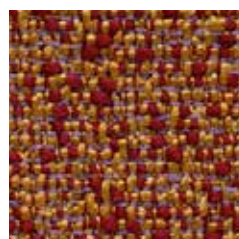
 climatex®



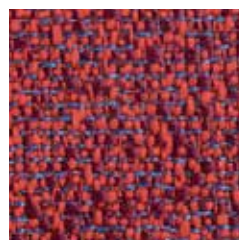
491 035-338



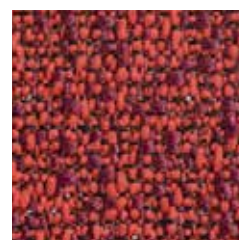
491 035-221



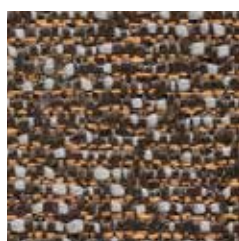
491 035-223



491 035-334



491 035-333



491 035-772



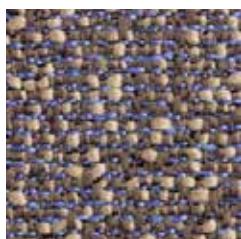
491 035-992

Picto

 climatex®



491 035-588



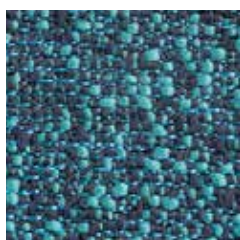
491 035-775



491 035-583



491 035-121



491 035-587



491 035-935



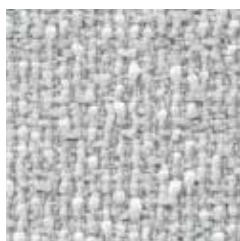
491 035-128



491 035-934

Picto

 climatex®



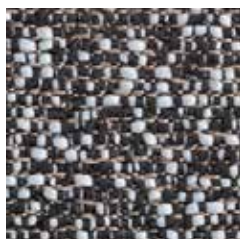
491 035-901



491 035-931



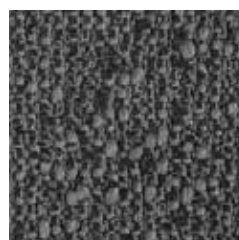
491 035-778



491 035-991



491 035-997



491 035-996



491 035-994



491 035-998



491 035-999

Picto

 climatex®

Design

Climatex

Farben – Colors – Colori – Couleur

24

Material – Composition – Composizione – Composition

70 % Cradura™, PA

18 % Certified Virgin Wool, WV

12 % Redesigned Lenzing FRTM, CV FR

Nutzbreite – Nominal Width – Larghezza utilizzabile – Largeur utile

141 cm

Gewicht – Weight – Peso – Poids

476 g/lfm

Schallabsorption – Sound absorption – Assorbimento acustico – Absorption acoustique

$\alpha_w = 0,55$

Scheuerfestigkeit – Abrasion resistance – Resistenza all'abrasione – Résistance à l'abrasion

200'000 Martindale, EN ISO 12947-2

Pilling – Résistance au boulochage

4 - 5, EN ISO 12945-2

Lichtechtheit – Light fastness – Solidità alla luce – Stabilité aux UV

6, EN ISO 105-B02

Reibechtheit – Fastness to rubbing – Resistenza allo sfregamento – Résistance au frottement

dry 4 - 5, wet 4 - 5, EN ISO 105-X12

Brandnormen – Fire standards – Norme antincendio – Normes incendie

EN 1021-1/2

BS 5852-0/1

California TB 117, Class 1

Pflege – Care – Cura – Conseil d'entretien

