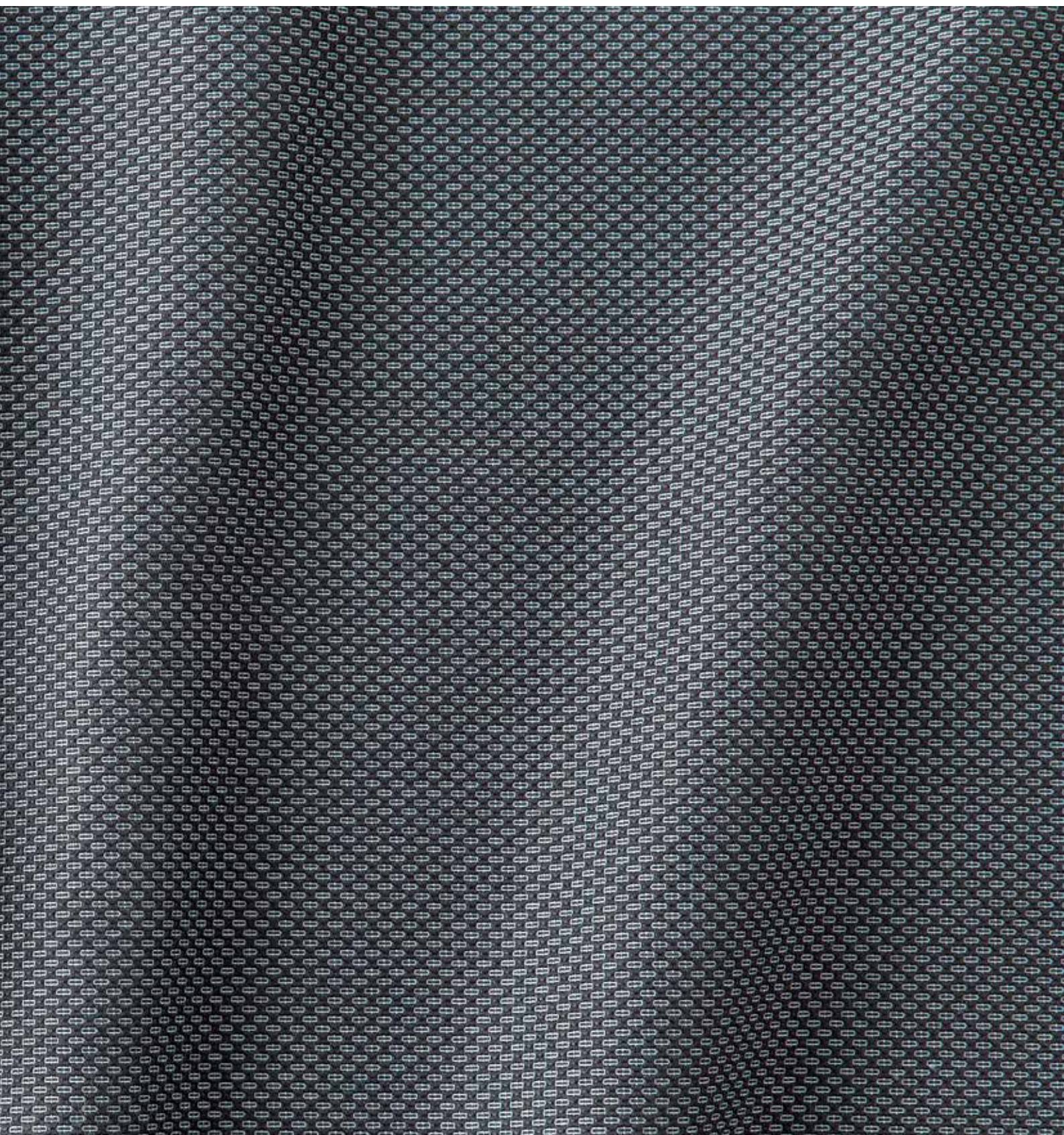


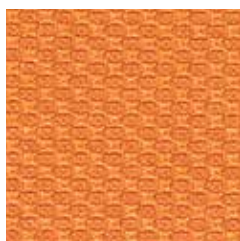
Ultra

 climatex®



Ultra

 climatex®



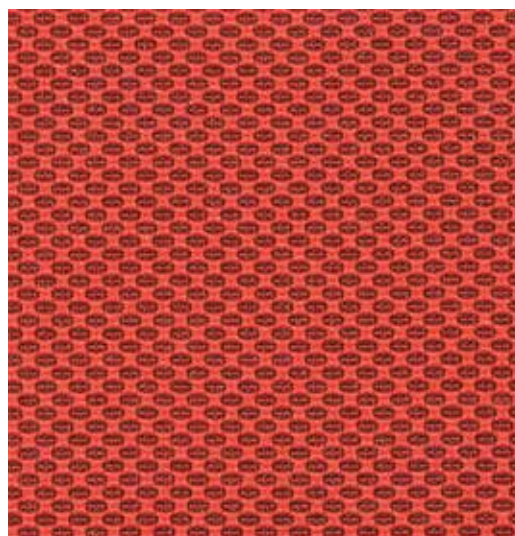
491 008-222



491 008-233



491 008-333



491 008-353



491 008-373



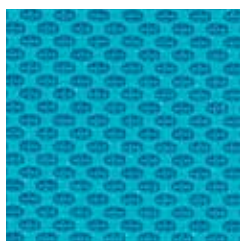
491 008-783



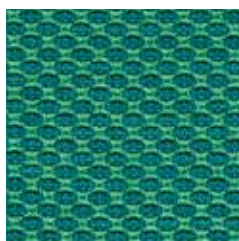
491 008-385

Ultra

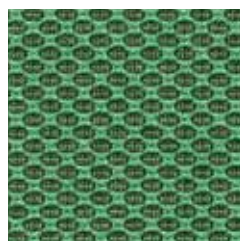
 climatex®



491 008-523



491 008-655



491 008-696



491 008-555



491 008-565



491 008-915



491 008-575



491 008-585



491 008-976



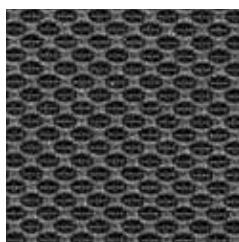
491 008-925



491 008-972



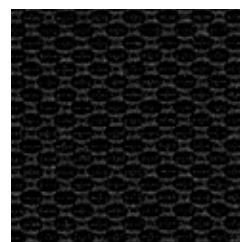
491 008-971



491 008-942



491 008-985



491 008-999

Ultra

 climatex®



491 008-111



491 008-110



491 008-123



491 008-199



491 008-153



491 008-132



491 008-721



491 008-961



491 008-792



491 008-777



491 008-951

Ultra

 climatex®

Design

Climatex

Farben – Colors – Colori – Couleur

33

Material – Composition – Composizione – Composition

72 % Cradura™, PA

16 % Certified Virgin Wool, WV

12 % Redesigned Lenzing FR™, CV FR

Nutzbreite – Nominal Width – Larghezza utilizzabile – Largeur utile

141 cm

Gewicht – Weight – Peso – Poids

437 g/lfm

Schallabsorption – Sound absorption – Assorbimento acustico – Absorption acoustique

$\alpha_w = 0,50$

Scheuerfestigkeit – Abrasion resistance – Resistenza all'abrasione – Résistance à l'abrasion

500'000 Martindale, EN ISO 12947-2

Pilling – Résistance au boulochage

4, EN ISO 12945-2

Lichtechtheit – Light fastness – Solidità alla luce – Stabilité aux UV

6 - 7, EN ISO 105-B02

Reibechtheit – Fastness to rubbing – Resistenza allo sfregamento – Résistance au frottement

dry 4 - 5, wet 4 - 5, EN ISO 105-X12

Brandnormen – Fire standards – Norme antincendio – Normes incendie

EN 1021-1/2

BS 5852-0/1

California TB 117, Class 1

Pflege – Care – Cura – Conseil d'entretien

