

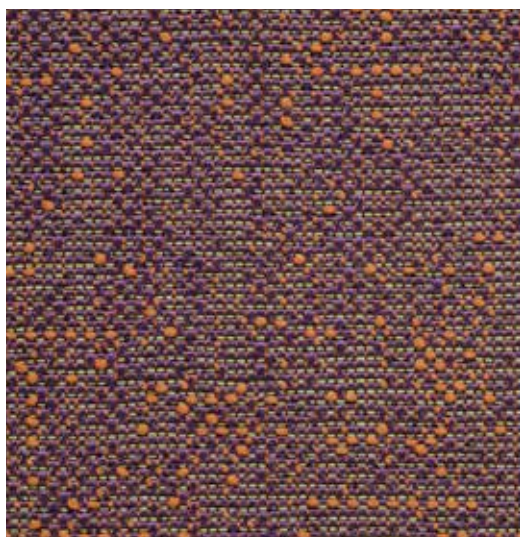
Assam

 climatex®

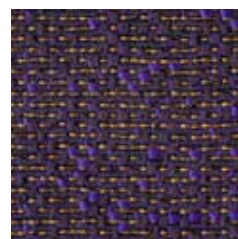


Assam

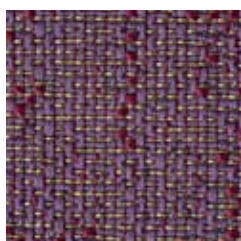
 climatex®



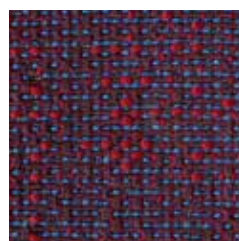
491 029-782



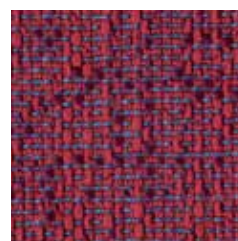
491 029-582



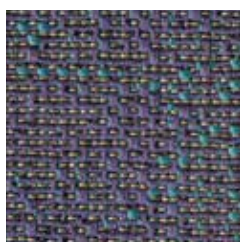
491 029-781



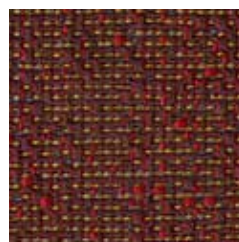
491 029-383



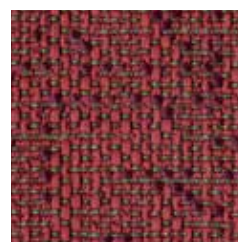
491 029-333



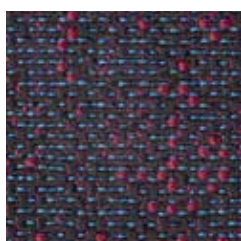
491 029-786



491 029-384



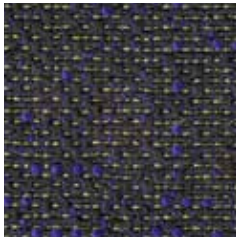
491 029-334



491 029-995

Assam

 climatex®



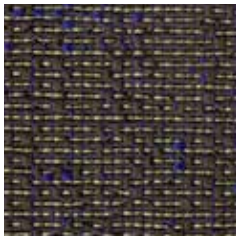
491 029-996



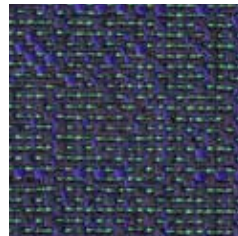
491 029-588



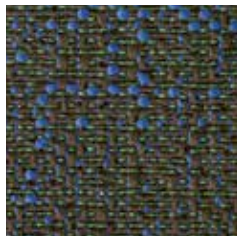
491 029-584



491 029-778



491 029-587



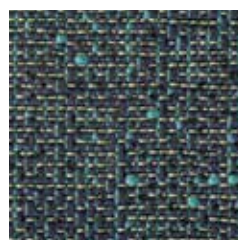
491 029-775



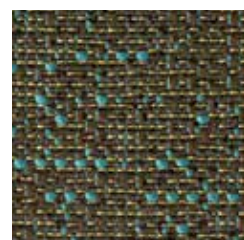
491 029-777



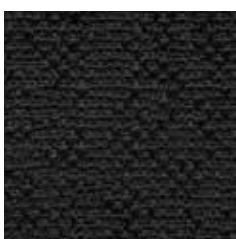
491 029-997



491 029-586



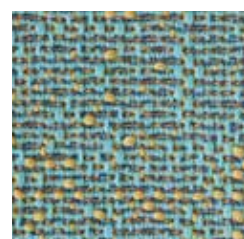
491 029-776



491 029-999

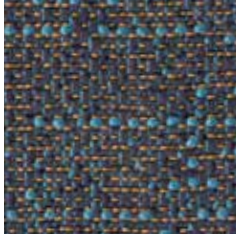


491 029-998



491 029-521

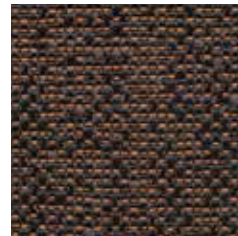
# Assam



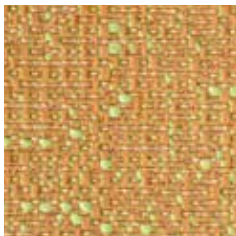
491 029-585



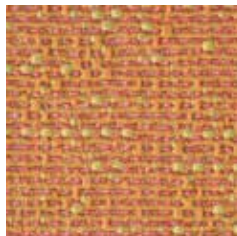
491 029-993



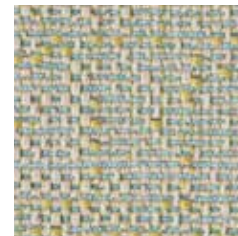
491 029-992



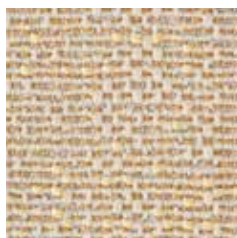
491 029-222



491 029-223



491 029-126



491 029-122



491 029-128



491 029-121



491 029-111

# Assam

 climatex®

## Design

Climatex

## Farben – Colors – Colori – Couleur

32

## Material – Composition – Composizione – Composition

68 % Cradura™, PA

19 % Certified Virgin Wool, WV

13 % Redesigned Lenzing FR™, CV FR

## Nutzbreite – Nominal Width – Larghezza utilizzabile – Largeur utile

141 cm

## Gewicht – Weight – Peso – Poids

437 g/lfm

## Schallabsorption – Sound absorption – Assorbimento acustico – Absorption acoustique

$\alpha_w = 0,55$

## Scheuerfestigkeit – Abrasion resistance – Resistenza all'abrasione – Résistance à l'abrasion

300'000 Martindale, EN ISO 12947-2

## Pilling – Résistance au boulochage

4 - 5, EN ISO 12945-2

## Lichtechtheit – Light fastness – Solidità alla luce – Stabilité aux UV

6, EN ISO 105-B02

## Reibechtheit – Fastness to rubbing – Resistenza allo sfregamento – Résistance au frottement

dry 4 - 5, wet 4 - 5, EN ISO 105-X12

## Brandnormen – Fire standards – Norme antincendio – Normes incendie

EN 1021-1/2

BS 5852-0/1

California TB 117, Class 1

## Pflege – Care – Cura – Conseil d'entretien

