

Grano

 climatex®

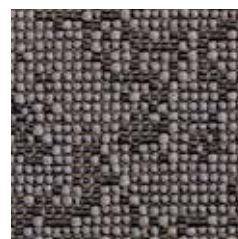


Grano

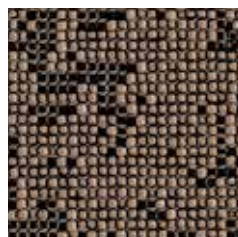
 climatex®



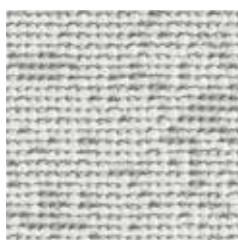
491 012-906



491 012-938



491 012-996



491 012-123



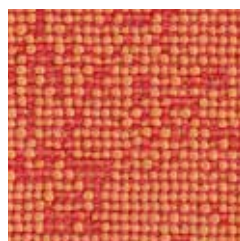
491 012-997



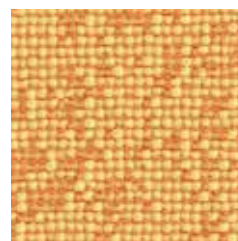
491 012-935

Grano

 climatex®



491 012-332



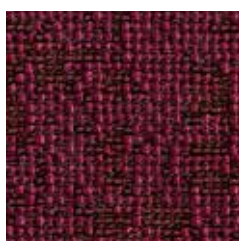
491 012-221



491 012-335



491 012-383



491 012-388

Grano

 climatex®



491 012-555



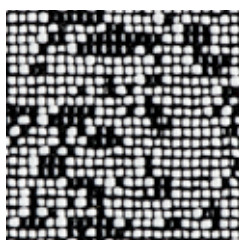
491 012-585



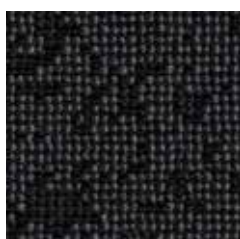
491 012-936



491 012-903



491 012-991



491 012-998



491 012-999

Grano

 climatex®

Design

Climatex

Farben – Colors – Colori – Couleur

18

Material – Composition – Composizione – Composition

69 % Cradura™, PA

18 % Certified Virgin Wool, WV

13 % Redesigned Lenzing FR™, CV FR

Nutzbreite – Nominal Width – Larghezza utilizzabile – Largeur utile

141 cm

Gewicht – Weight – Peso – Poids

450 g/lfm

Scheuerfestigkeit – Abrasion resistance – Resistenza all'abrasione – Résistance à l'abrasion

465'000 Martindale, EN ISO 12947-2

Pilling – Résistance au boulochage

4, EN ISO 12945-2

Lichtechtheit – Light fastness – Solidità alla luce – Stabilité aux UV

6, EN ISO 105-B02

Reibechtheit – Fastness to rubbing – Resistenza allo sfregamento – Résistance au frottement

dry 4 - 5, wet 4, EN ISO 105-X12

Brandnormen – Fire standards – Norme antincendio – Normes incendie

EN 1021-1/2

BS 5852-0/1

California TB 117, Class 1

Pflege – Care – Cura – Conseil d'entretien

