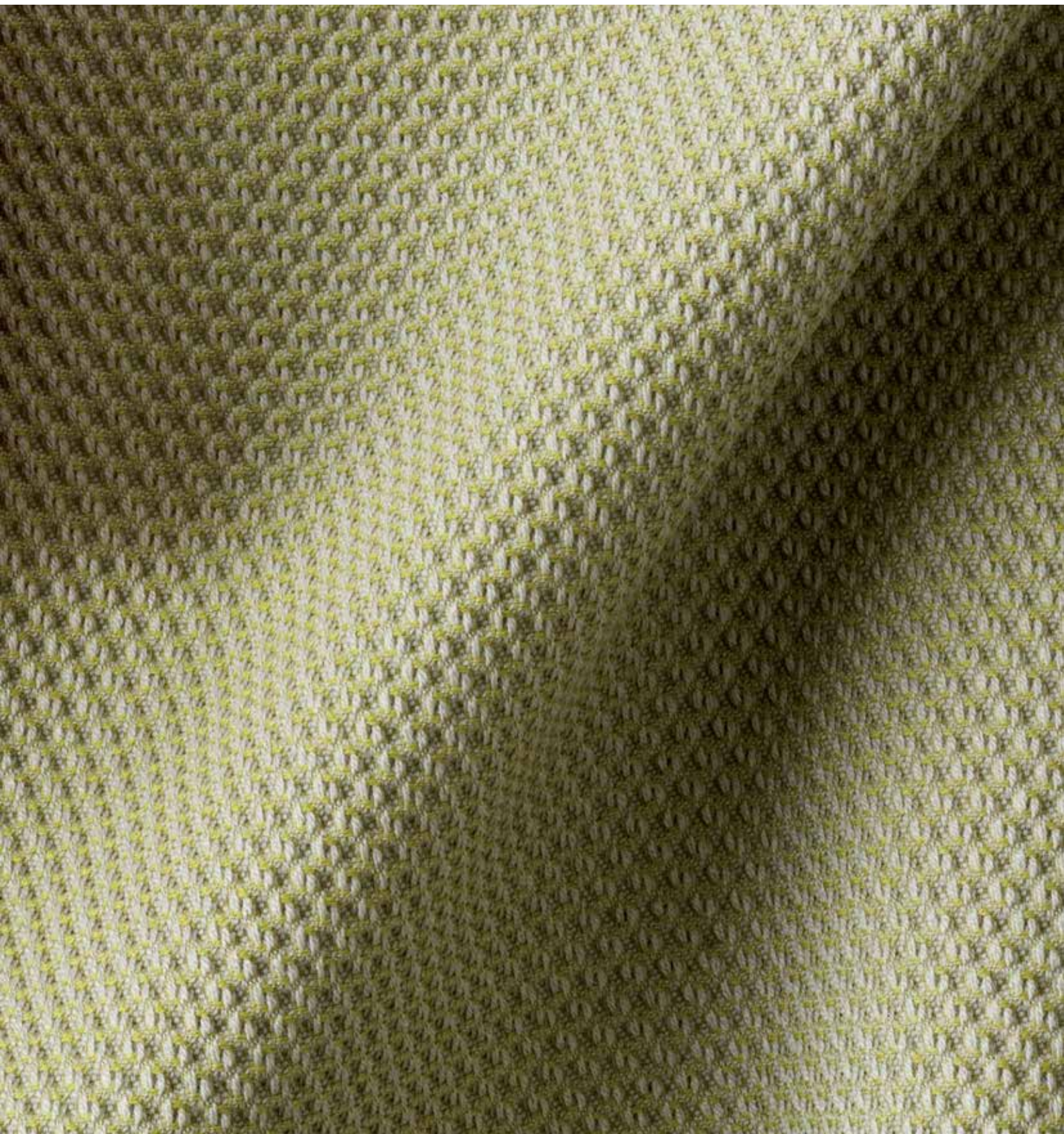


Balani

 climatex®



Balani

 climatex®



481 028-136



481 028-100



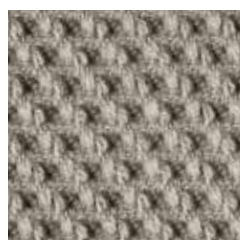
481 028-122



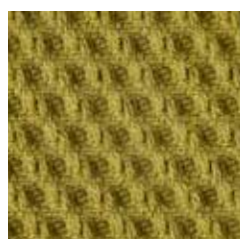
481 028-130



481 028-906



481 028-701



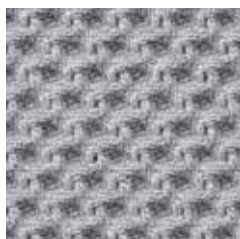
481 028-660

Balani

 climatex®



481 028-970



481 028-800



481 028-985



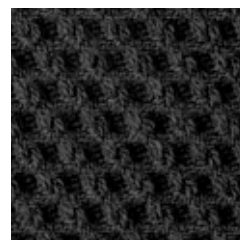
481 028-982



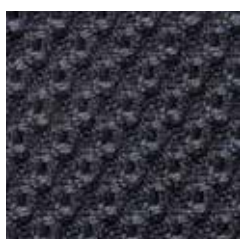
481 028-984



481 028-907



481 028-999



481 028-997



481 028-980

Balani

 climatex®



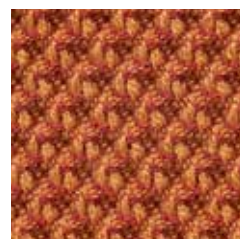
481 028-223



481 028-221



481 028-330



481 028-333



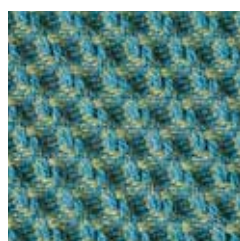
481 028-904



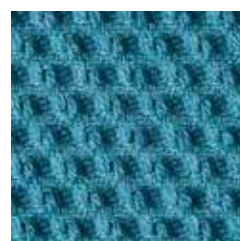
481 028-334



481 028-902



481 028-556



481 028-550

Balani

 climatex®

Design

Climatex

Farben – Colors – Colori – Couleur

25

Material – Composition – Composizione – Composition

55 % Certified Virgin Wool, WV

30 % Redesigned Lenzing FR™, CV FR

15 % PA

Nutzbreite – Nominal Width – Larghezza utilizzabile – Largeur utile

131 cm

Gewicht – Weight – Peso – Poids

633 g/lfm

Scheuerfestigkeit – Abrasion resistance – Resistenza all'abrasione – Résistance à l'abrasion

100'000 Martindale, EN ISO 12947-2

Pilling – Résistance au boulochage

100'000 Martindale, EN ISO 12947-2

Lichtechtheit – Light fastness – Solidità alla luce – Stabilité aux UV

100'000 Martindale, EN ISO 12947-2

Reibechtheit – Fastness to rubbing – Resistenza allo sfregamento – Résistance au frottement

dry 4 - 5, wet 3 - 4, EN ISO 105-X12

Brandnormen – Fire standards – Norme antincendio – Normes incendie

EN 1021-1/2

BS 5852-0/1

BS 5852 P2, Crib 5

California TB 117, Class 1

Pflege – Care – Cura – Conseil d'entretien

