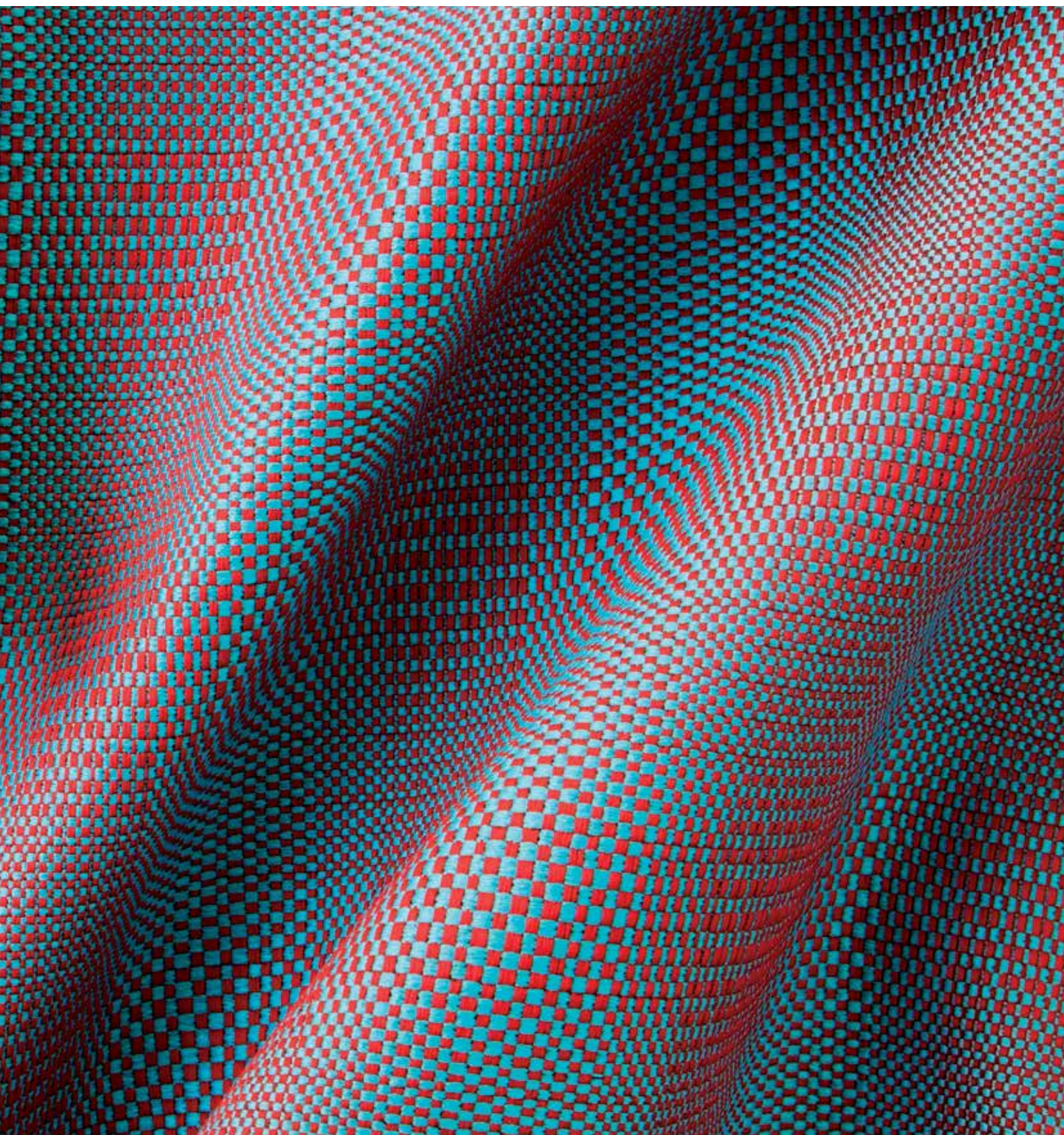


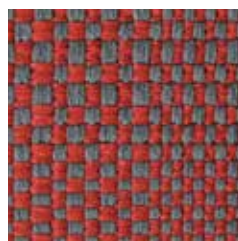
Tanto

 climatex®

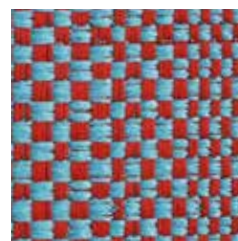


Tanto

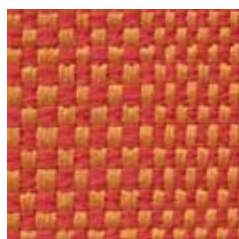
 climatex®



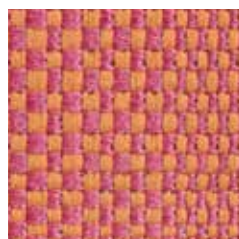
491 032-933



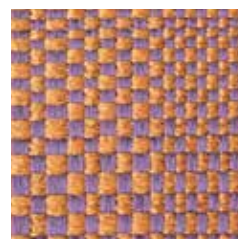
491 032-353



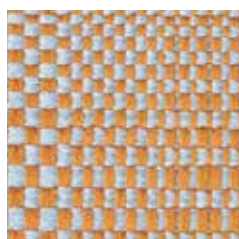
491 032-222



491 032-223



491 032-782



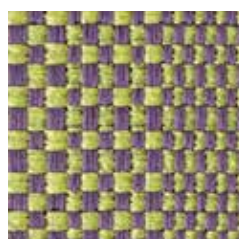
491 032-224



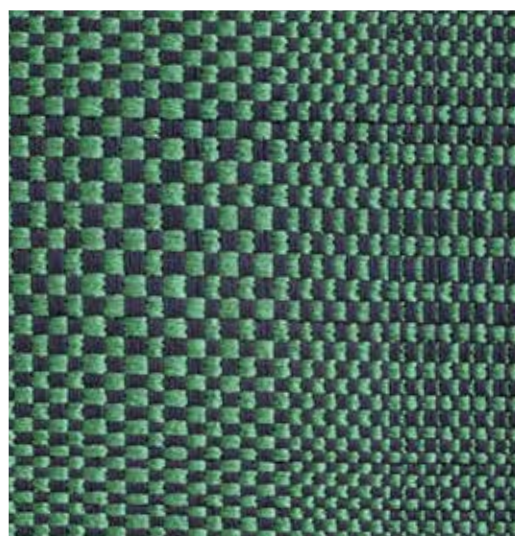
491 032-221



491 032-901



491 032-786



491 032-586

Tanto

 climatex®



491 032-772



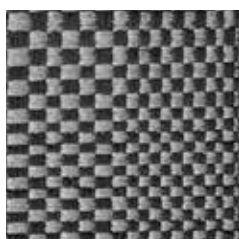
491 032-904



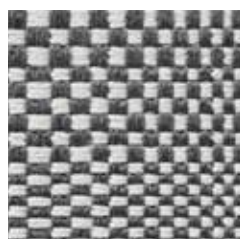
491 032-779



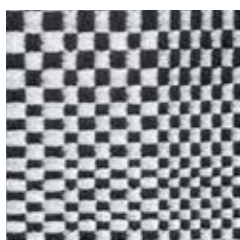
491 032-587



491 032-998



491 032-908



491 032-990



491 032-999

Tanto

 climatex®



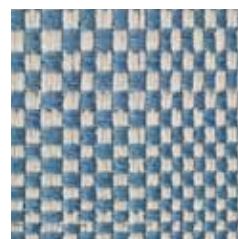
491 032-119



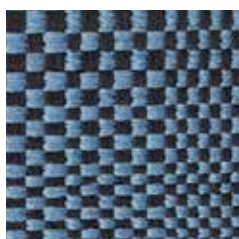
491 032-997



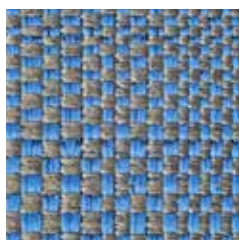
491 032-565



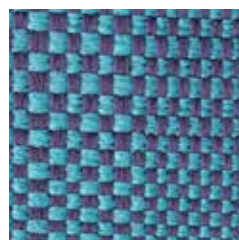
491 032-125



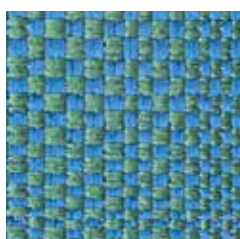
491 032-995



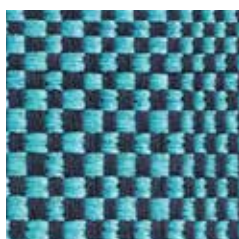
491 032-569



491 032-785



491 032-552



491 032-585

Tanto

 climatex®

Design

Climatex

Farben – Colors – Colori – Couleur

27

Material – Composition – Composizione – Composition

70 % Cradura™, PA

17 % Certified Virgin Wool, WV

13 % Redesigned Lenzing FR™, CV FR

Nutzbreite – Nominal Width – Larghezza utilizzabile – Largeur utile

141 cm

Gewicht – Weight – Peso – Poids

429 g/lfm

Schallabsorption – Sound absorption – Assorbimento acustico – Absorption acoustique

$\alpha_w = 0,55$

Scheuerfestigkeit – Abrasion resistance – Resistenza all'abrasione – Résistance à l'abrasion

450'000 Martindale, EN ISO 12947-2

Pilling – Résistance au boulochage

4 - 5, EN ISO 12945-2

Lichtechtheit – Light fastness – Solidità alla luce – Stabilité aux UV

6 - 7, EN ISO 105-B02

Reibechtheit – Fastness to rubbing – Resistenza allo sfregamento – Résistance au frottement

dry 4 - 5, wet 4 - 5, EN ISO 105-X12

Brandnormen – Fire standards – Norme antincendio – Normes incendie

EN 1021-1/2

BS 5852-0/1

California TB 117, Class 1

Pflege – Care – Cura – Conseil d'entretien



www.climatex.com