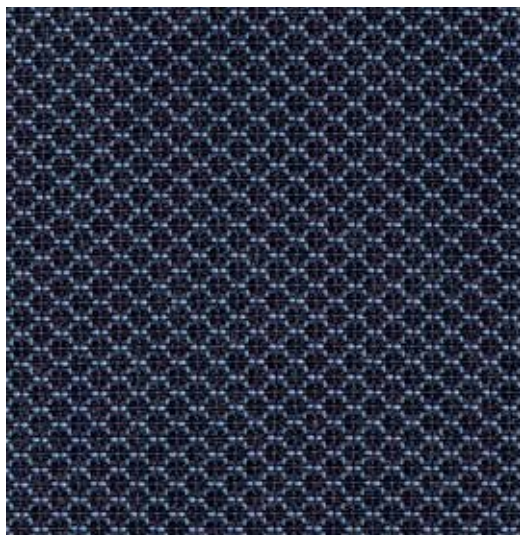
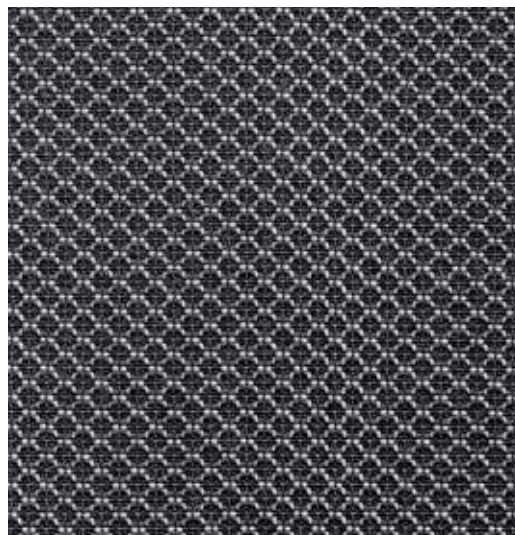


Strong

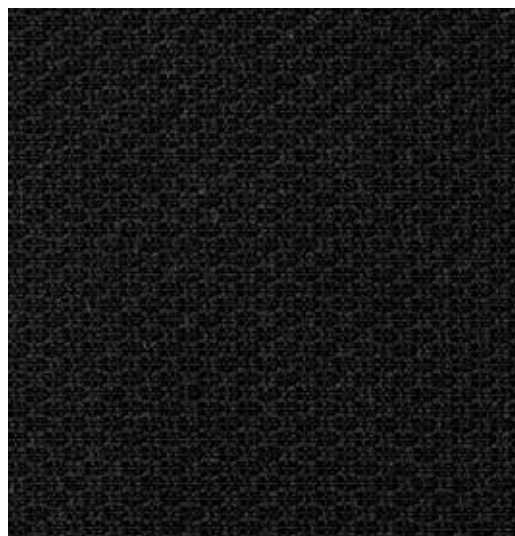
 climatex®



491 028-586



491 028-931



491 028-999

Strong

 climatex®

Design

Climatex

Farben – Colors – Colori – Couleur

3

Material – Composition – Composizione – Composition

72 % Cradura™, PA

16 % Certified Virgin Wool, WV

12 % Redesigned Lenzing FR™, CV FR

Nutzbreite – Nominal Width – Larghezza utilizzabile – Largeur utile

141 cm

Gewicht – Weight – Peso – Poids

415 g/lfm

Scheuerfestigkeit – Abrasion resistance – Resistenza all'abrasione – Résistance à l'abrasion

500'000 Martindale, EN ISO 12947-2

Pilling – Résistance au boulochage

4, EN ISO 12945-2

Lichtechtheit – Light fastness – Solidità alla luce – Stabilité aux UV

6 - 7, EN ISO 105-B02

Reibechtheit – Fastness to rubbing – Resistenza allo sfregamento – Résistance au frottement

dry 4 - 5, wet 4 - 5, EN ISO 105-X12

Brandnormen – Fire standards – Norme antincendio – Normes incendie

EN 1021-1/2

BS 5852-0/1

California TB 117, Class 1

Pflege – Care – Cura – Conseil d'entretien

