

Kaori

 climatex®



Kaori

 climatex®



491 036-581



491 036-121



491 036-907



491 036-127



491 036-126



491 036-588

Kaori

 climatex®



491 036-936



491 036-937



491 036-587



491 036-388



491 036-387



491 036-779



491 036-777



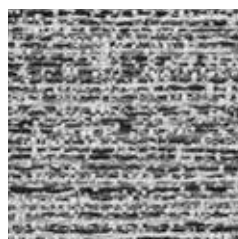
491 036-999

Kaori

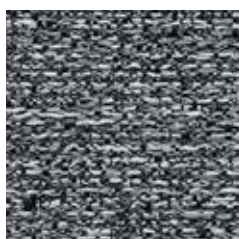
 climatex®



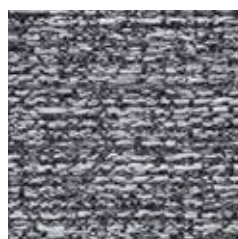
491 036-908



491 036-909



491 036-997



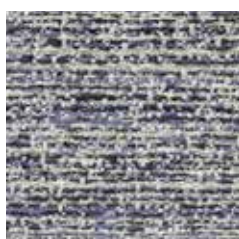
491 036-589



491 036-585



491 036-995



491 036-905



491 036-998

# Kaori

 climatex®

## Design

Climatex

## Farben – Colors – Colori – Couleur

22

## Material – Composition – Composizione – Composition

70 % Cradura™, PA

17 % Certified Virgin Wool, WV

13 % Redesigned Lenzing FR™, CV FR

## Nutzbreite – Nominal Width – Larghezza utilizzabile – Largeur utile

141 cm

## Gewicht – Weight – Peso – Poids

455 g/lfm

## Schallabsorption – Sound absorption – Assorbimento acustico – Absorption acoustique

$\alpha_w = 0,55$

## Scheuerfestigkeit – Abrasion resistance – Resistenza all'abrasione – Résistance à l'abrasion

100'000 Martindale, EN ISO 12947-2

## Pilling – Résistance au boulochage

4 - 5, EN ISO 12945-2

## Lichtechtheit – Light fastness – Solidità alla luce – Stabilité aux UV

6 - 7, EN ISO 105-B02

## Reibechtheit – Fastness to rubbing – Resistenza allo sfregamento – Résistance au frottement

dry 4 - 5, wet 4 - 5, EN ISO 105-X12

## Brandnormen – Fire standards – Norme antincendio – Normes incendie

EN 1021-1/2

BS 5852-0/1

California TB 117, Class 1

## Pflege – Care – Cura – Conseil d'entretien

