

 **CLIMATEx**

Vivo





471 150-605



471 150-603



471 150-823



471 150-102



471 150-829



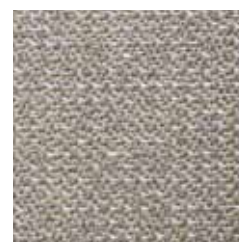
471 150-822



471 150-110



471 150-190



471 150-107



471 150-905



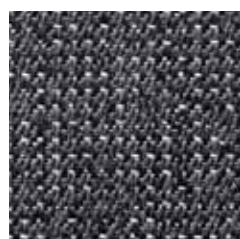
471 150-109



471 150-999



471 150-985



471 150-901



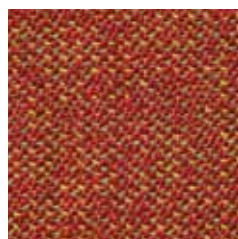
471 150-108



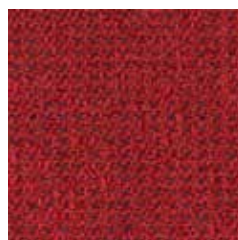
471 150-210



471 150-302



471 150-332



471 150-333



471 150-335



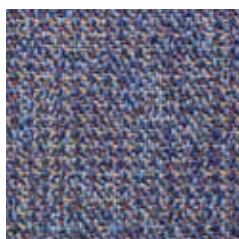
471 150-827



471 150-809



471 150-705



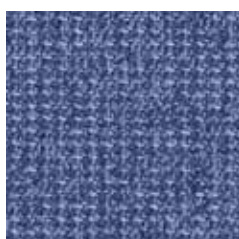
471 150-502



471 150-856



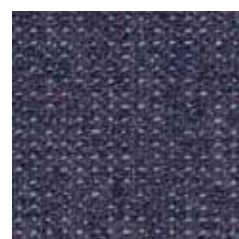
471 150-505



471 150-510



471 150-555



471 150-907

### Design

Climatex

### Farben - Colors - Colori - Couleur

29

### Material - Composition - Composizione - Composition

60 % Certified Virgin Wool, WV

40 % Redesigned Lenzing FR™, CV FR

### Nutzbreite - Nominal - Width Larghezza utilizzabile - Largeur utile

136 cm

### Gewicht - Weight - Peso - Poids

485 g/lfm

### Scheuerfestigkeit - Abrasion resistance - Resistenza all'abrasione - Résistance à l'abrasion

40'000 Martindale, EN ISO 12947-2

### Pilling - Résistance au boulochage

4 - 5, EN ISO 12945-2

### Lichtechtheit - Light fastness - Solidità alla luce - Stabilité aux UV

5, EN ISO 105-B02

### Reibechtheit - Fastness to rubbing - Resistenza allo sfregamento - Résistance au frottement

dry 4, wet 4, EN ISO 105-X12

### Brandnormen - Fire standards - Norme antincendio - Normes incendie

EN 1021-1/2; BS 5852-0/1

BS 5852 P2, Crib 5; EN 11925-2, E

ÖNORM B 3825, B1; NF P 92503, M2

IMO Resolution MSC 307 (88) Annex 1, Part 8

UNI 8456, UNI 9174, Classe 1

California TB 117, Class 1

FAR/JAR 25.853

### Pflege - Care - Cura - Conseil d'entretien

