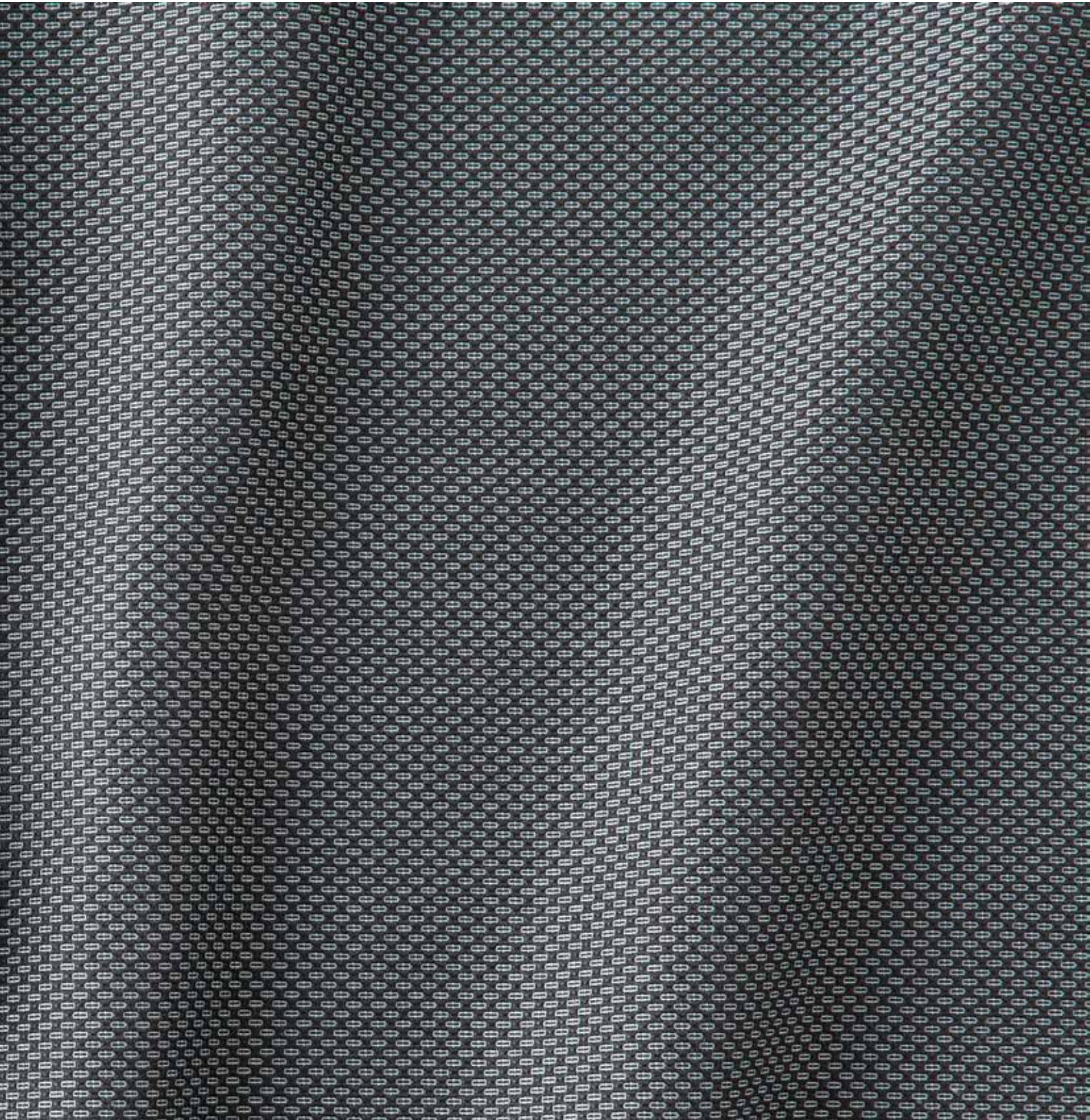
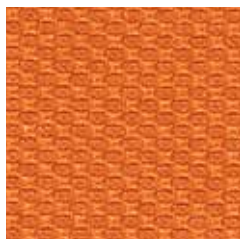




Ultra

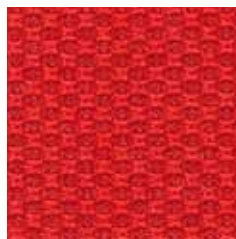




491 008-222



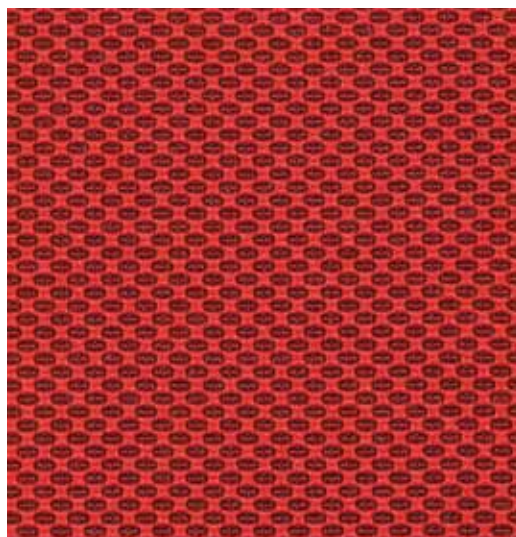
491 008-233



491 008-333



491 008-373



491 008-353



491 008-783



491 008-385



491 008-585



491 008-575



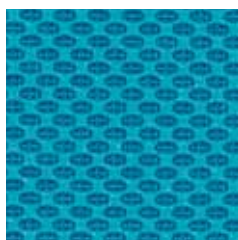
491 008-565



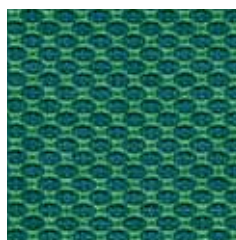
491 008-555



491 008-915



491 008-523



491 008-655



491 008-696

Ultra



491 008-111



491 008-110



491 008-123



491 008-199



491 008-153



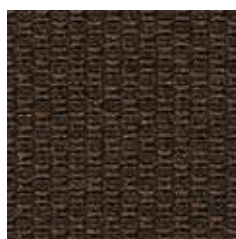
491 008-132



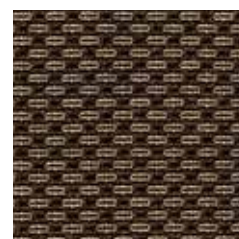
491 008-961



491 008-792



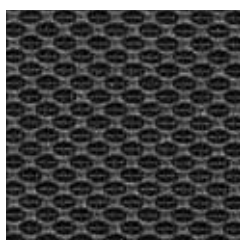
491 008-777



491 008-721



491 008-951



491 008-942



491 008-925



491 008-972



491 008-999



491 008-985



491 008-971



491 008-976

Design
Climatex

Farben - Colors - Colori - Couleur
33

Material - Composition - Composizione - Composition
72 % Cradura™, PA
16 % Certified Virgin Wool, WV
12 % Redesigned Lenzing FR™, CV FR

Nutzbreite - Nominal Width - Larghezza utilizzabile - Largeur utile
140 cm

Gewicht - Weight - Peso - Poids
437 g/lfm

Schallabsorbtion - Sound absorbtion - Assorbimento acustico - Absorption acoustique
 $\alpha_w = 0,50$

Scheuerfestigkeit - Abrasion resistance - Resistenza all'abrasione - Résistance à l'abrasion
500'000 Martindale, EN ISO 12947-2

Pilling - Résistance au boulochage
4, EN ISO 12945-2

Lichtechtheit - Light fastness - Solidità alla luce - Stabilité aux UV
6 - 7, EN ISO 105-B02

Reibechtheit - Fastness to rubbing - Resistenza allo sfregamento - Résistance au frottement
dry 4 - 5, wet 4 - 5, EN ISO 105-X12

Brandnormen - Fire standards - Norme antincendio - Normes incendie
EN 1021-1/2
BS 5852-0/1
IMO Resolution MSC 307 (88) Annex 1, Part 8
California TB 117, Class 1

Pflege - Care - Cura - Conseil d'entretien

