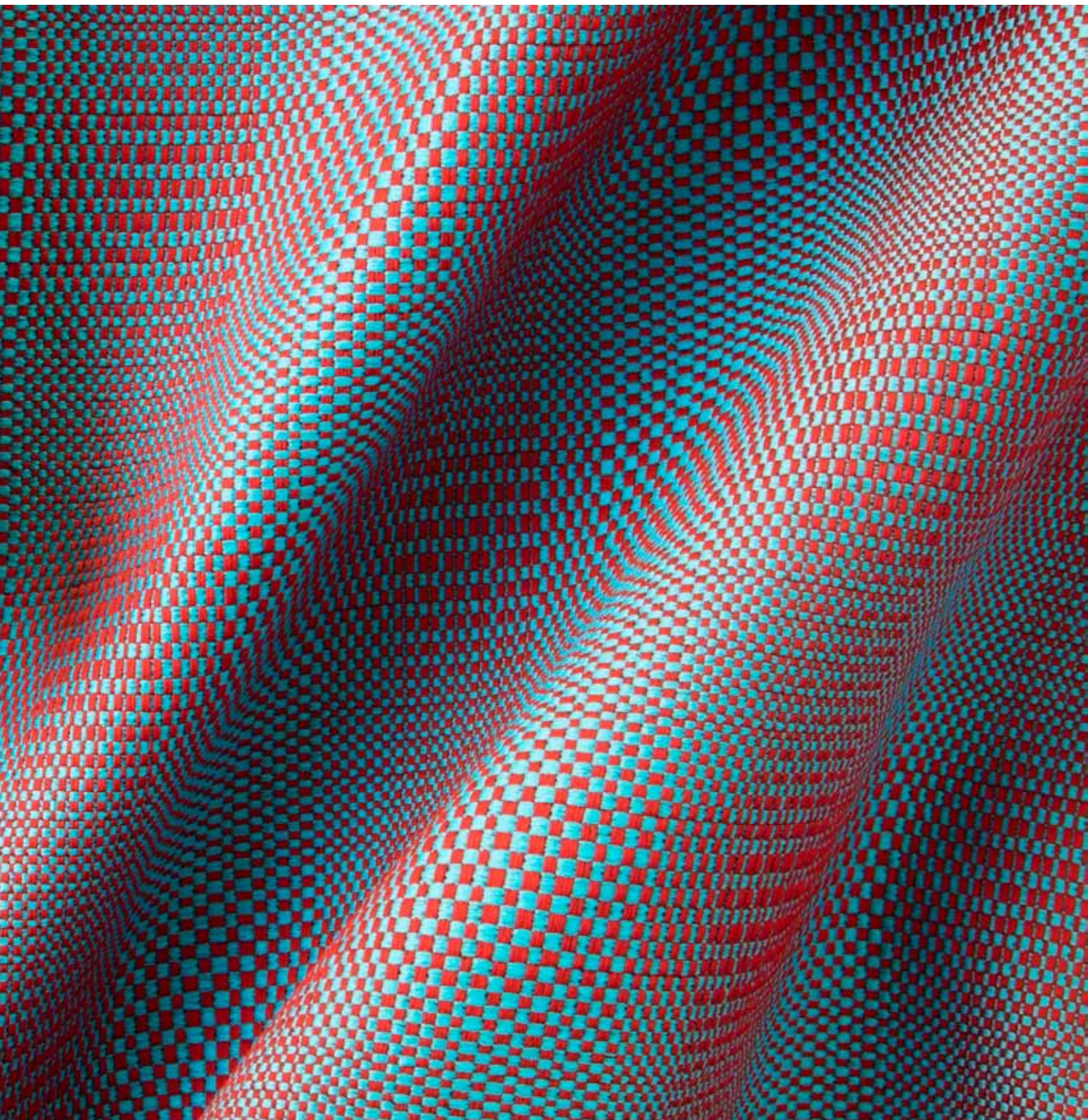
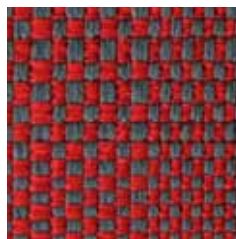




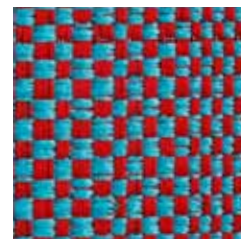
Tanto



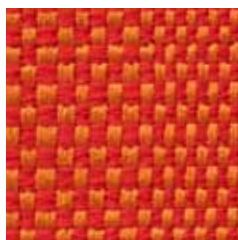
Tanto



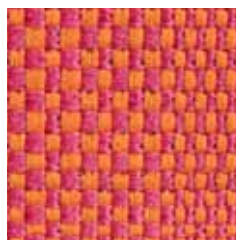
491 032-933



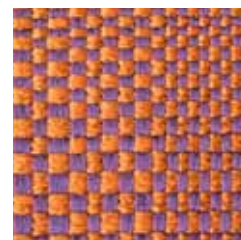
491 032-353



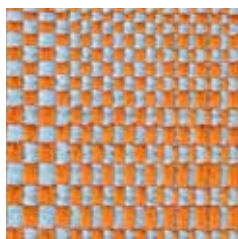
491 032-222



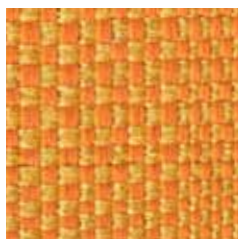
491 032-223



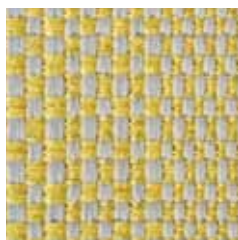
491 032-782



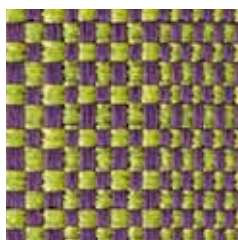
491 032-224



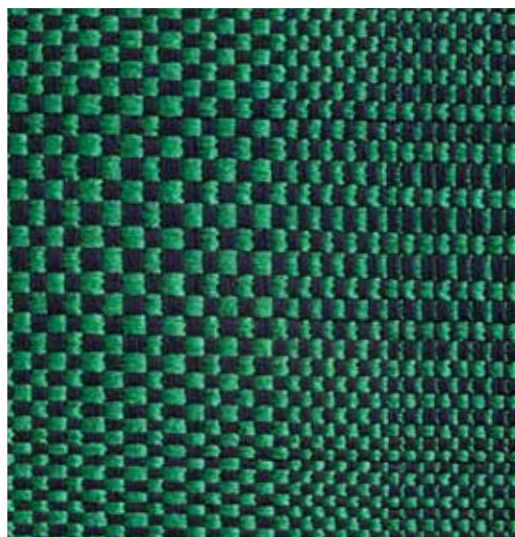
491 032-221



491 032-901

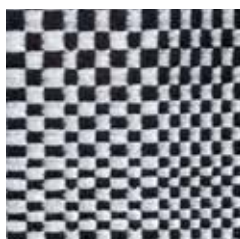


491 032-786

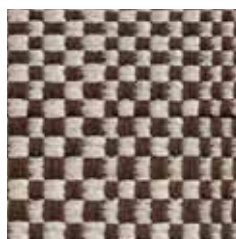


491 032-586

Tanto



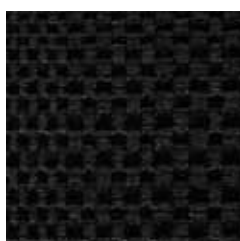
491 032-990



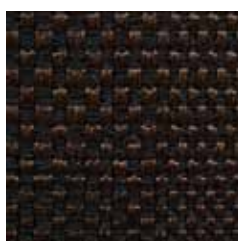
491 032-772



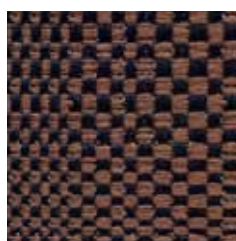
491 032-904



491 032-999



491 032-779



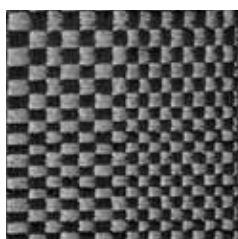
491 032-587



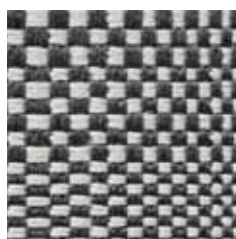
491 032-119



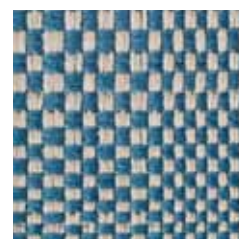
491 032-997



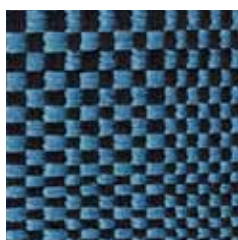
491 032-998



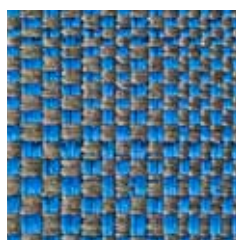
491 032-908



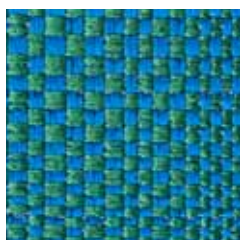
491 032-125



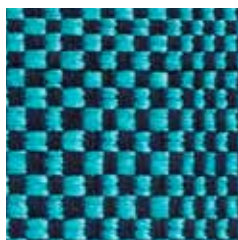
491 032-995



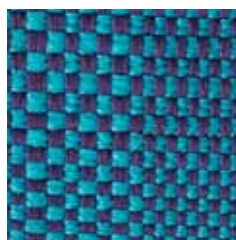
491 032-569



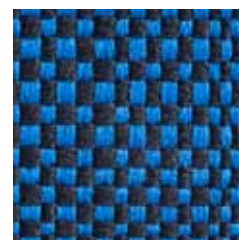
491 032-552



491 032-585



491 032-785



491 032-565

Design
Climatex

Farben - Colors - Colori - Couleur
27

Material - Composition - Composizione - Composition
70 % Cradura™, PA
17 % Certified Virgin Wool, WV
13 % Redesigned Lenzing FR™, CV FR

Nutzbreite - Nominal Width - Larghezza utilizzabile - Largeur utile
140 cm

Gewicht - Weight - Peso - Poids
429 g/lfm

Schallabsorbtion - Sound absorbtion - Assorbimento acustico - Absorption acoustique
 $\alpha_w = 0,55$

Scheuerfestigkeit - Abrasion resistance - Resistenza all'abrasione - Résistance à l'abrasion
450'000 Martindale, EN ISO 12947-2

Pilling - Résistance au boulochage
4 - 5, EN ISO 12945-2

Lichtechtheit - Light fastness - Solidità alla luce - Stabilité aux UV
6 - 7, EN ISO 105-B02

Reibechtheit - Fastness to rubbing - Resistenza allo sfregamento - Résistance au frottement
dry 4 - 5, wet 4 - 5, EN ISO 105-X12

Brandnormen - Fire standards - Norme antincendio - Normes incendie
EN 1021-1/2
BS 5852-0/1
IMO Resolution MSC 307 (88) Annex 1, Part 8
California TB 117, Class 1

Pflege - Care - Cura - Conseil d'entretien

