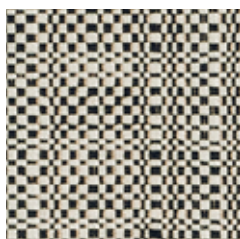






## Quadro



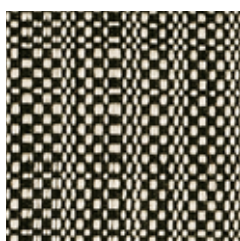
491 014-951



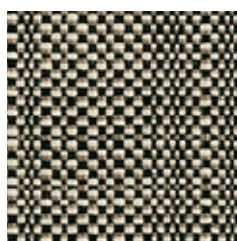
491 014-111



491 014-114



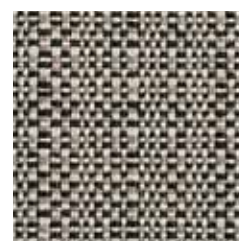
491 014-199



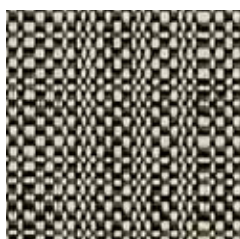
491 014-981



491 014-154



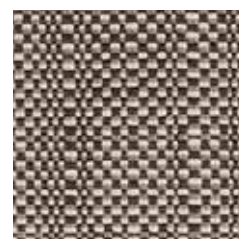
491 014-138



491 014-198



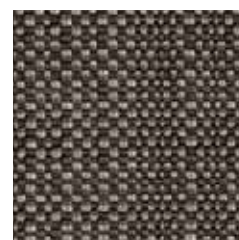
491 014-924



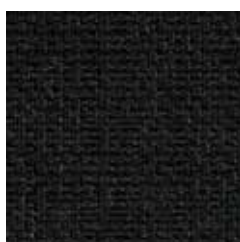
491 014-771



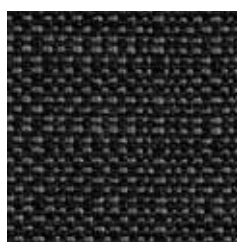
491 014-993



491 014-792



491 014-999



491 014-998



491 014-798



491 014-992

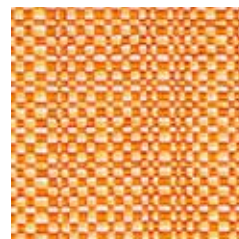
## Quadro



491 014-152



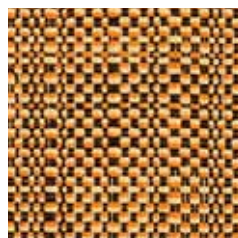
491 014-112



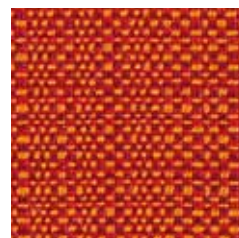
491 014-231



491 014-115



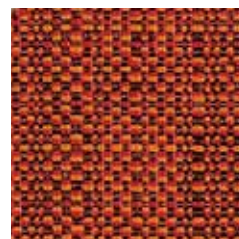
491 014-723



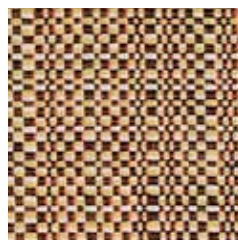
491 014-232



491 014-774



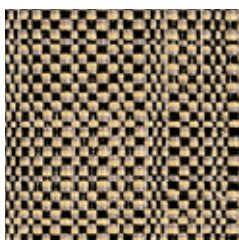
491 014-373



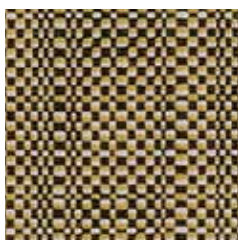
491 014-371



491 014-353



491 014-954



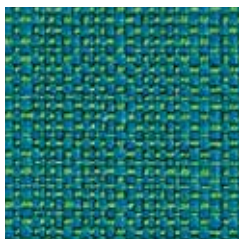
491 014-772



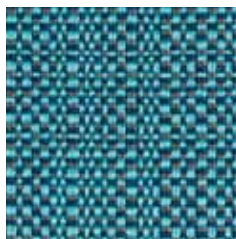
491 014-355



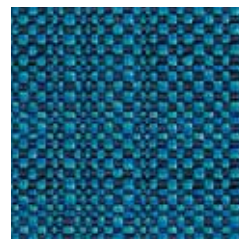
## Quadro



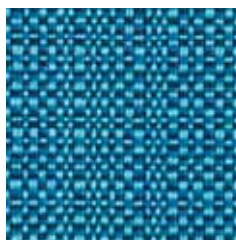
491 014-695



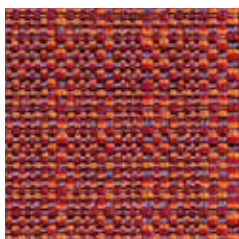
491 014-526



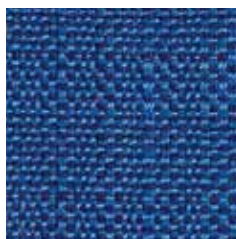
491 014-586



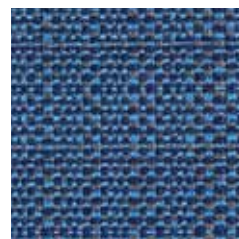
491 014-525



491 014-783



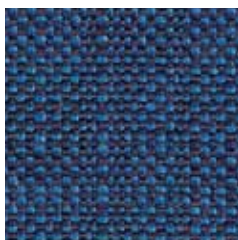
491 014-565



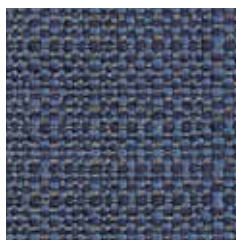
491 014-555



491 014-383



491 014-585



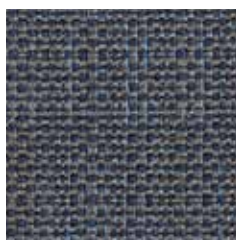
491 014-945



491 014-785



491 014-588



491 014-918

## Quadro

**Design**  
Climatex

**Farben - Colors - Colori - Couleur**  
42

**Material - Composition - Composizione - Composition**  
68 % Cradura™, PA  
18 % Certified Virgin Wool, WV  
14 % Redesigned Lenzing FR™, CV FR

**Nutzbreite - Nominal Width - Larghezza utilizzabile - Largeur utile**  
140 cm

**Gewicht - Weight - Peso - Poids**  
543 g/lfm

**Schallabsorbtion - Sound absorbtion - Assorbimento acustico - Absorption acoustique**  
 $\alpha_w = 0,55$

**Scheuerfestigkeit - Abrasion resistance - Resistenza all'abrasione - Résistance à l'abrasion**  
500'000 Martindale, EN ISO 12947-2  
Pilling Résistance au boulochage  
4, EN ISO 12945-2

**Lichtechtheit - Light fastness - Solidità alla luce - Stabilité aux UV**  
6, EN ISO 105-B02

**Reibechtheit - Fastness to rubbing - Resistenza allo sfregamento - Résistance au frottement**  
dry 4 - 5, wet 4 - 5, EN ISO 105-X12

**Brandnormen - Fire standards - Norme antincendio - Normes incendie**  
EN 1021-1/2  
BS 5852-0/1  
IMO Resolution MSC 307 (88) Annex 1, Part 8  
California TB 117, Class 1

**Pflege - Care - Cura - Conseil d'entretien**

