



Neo



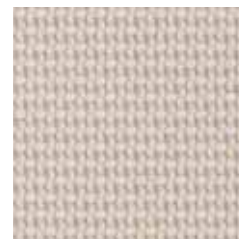
## Neo



491 055-901



491 055-121



491 055-111



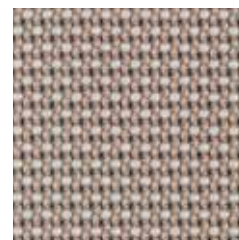
491 055-915



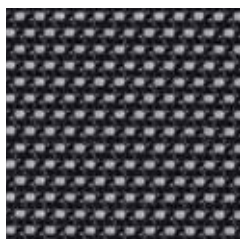
491 055-931



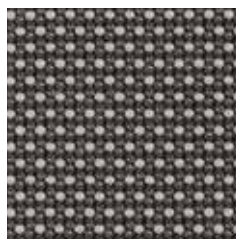
491 055-158



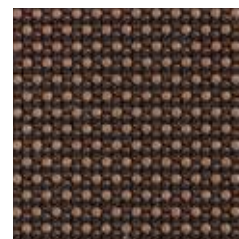
491 055-152



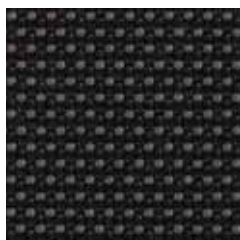
491 055-982



491 055-941



491 055-797



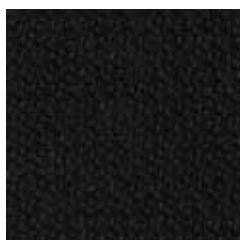
491 055-997



491 055-791



491 055-792



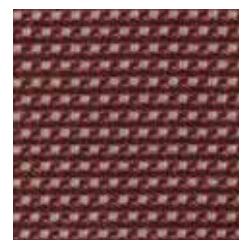
491 055-999



491 055-798

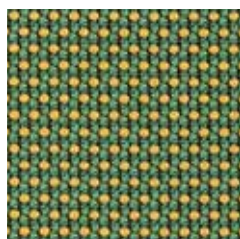


491 055-948

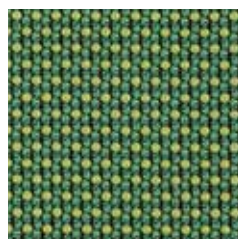


491 055-377

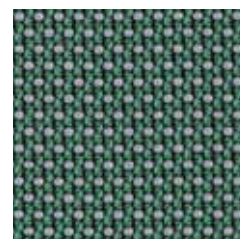
## Neo



491 055-691



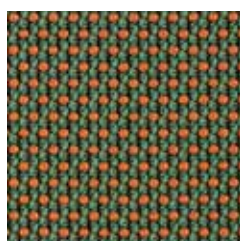
491 055-696



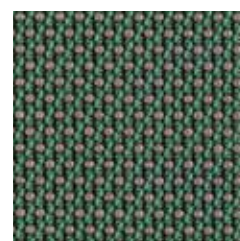
491 055-697



491 055-151



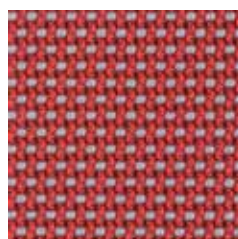
491 055-692



491 055-698



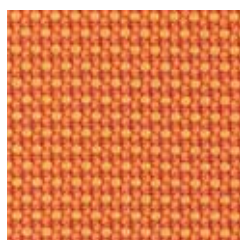
491 055-231



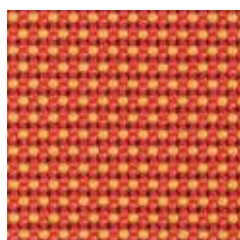
491 055-331



491 055-788



491 055-232



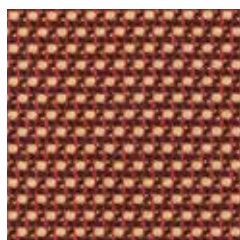
491 055-332



491 055-333



491 055-573



491 055-372



491 055-352

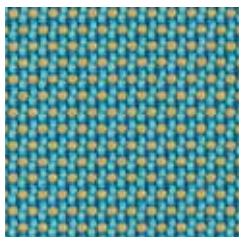


491 055-383

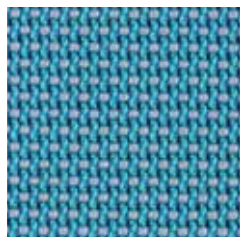


491 055-785

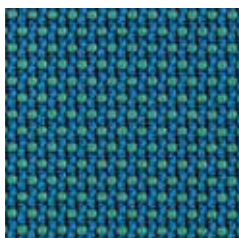
## Neo



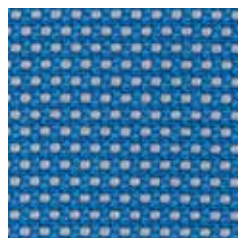
491 055-526



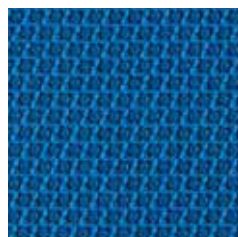
491 055-521



491 055-566



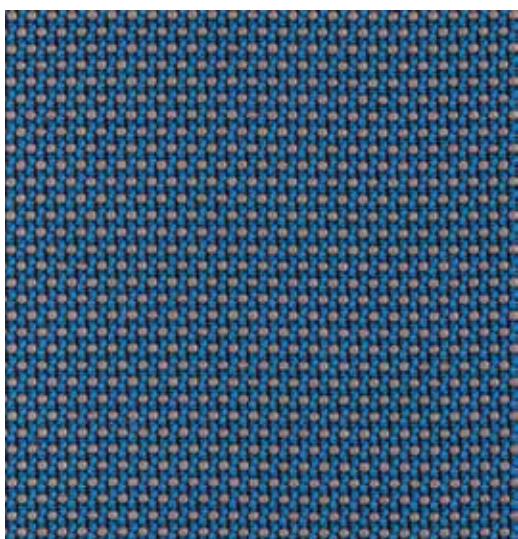
491 055-551



491 055-565



491 055-585



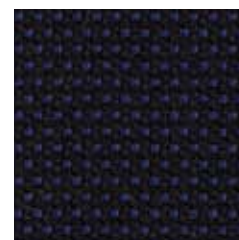
491 055-568



491 055-995



491 055-588



491 055-996

**Design**  
Climatex

**Farben - Colors - Colori - Couleur**  
44

**Material - Composition - Composizione - Composition**  
72 % Cradura™, PA  
16 % Certified Virgin Wool, WV  
12 % Redesigned Lenzing FR™, CV FR

**Nutzbreite - Nominal Width - Larghezza utilizzabile - Largeur utile**  
139 cm

**Gewicht - Weight - Peso - Poids**  
410 g/lfm

**Schallabsorbtion - Sound absorbtion - Assorbimento acustico - Absorption acoustique**  
 $\alpha_w = 0,50$

**Scheuerfestigkeit - Abrasion resistance - Resistenza all'abrasione - Résistance à l'abrasion**  
450'000 Martindale, EN ISO 12947-2

**Pilling - Résistance au boulochage**  
5, EN ISO 12945-2

**Lichtechtheit - Light fastness - Solidità alla luce - Stabilité aux UV**  
6, EN ISO 105-B02

**Reibechtheit - Fastness to rubbing - Resistenza allo sfregamento - Résistance au frottement**  
dry 4 - 5, wet 4, EN ISO 105-X12

**Brandnormen - Fire standards - Norme antincendio - Normes incendie**  
EN 1021-1/2  
BS 5852-0/  
IMO Resolution MSC 307 (88) Annex 1, Part 8  
California TB 117, Class 1

**Pflege - Care - Cura - Conseil d'entretien**

