



Natura



Natura



491 017-152



491 017-112



491 017-122



491 017-124



491 017-133



491 017-134



491 017-118



491 017-131



491 017-198



491 017-192



491 017-772



491 017-775

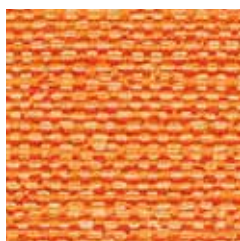


491 017-987



491 017-778

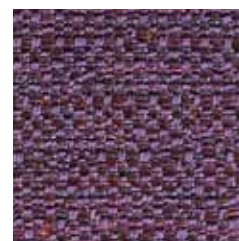
Natura



491 017-221



491 017-377



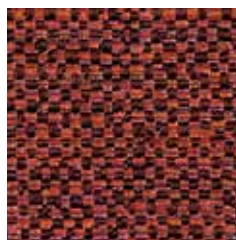
491 017-785



491 017-233



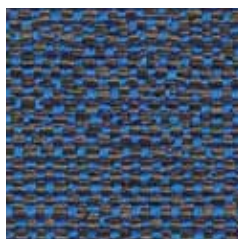
491 017-335



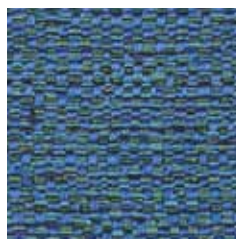
491 017-373



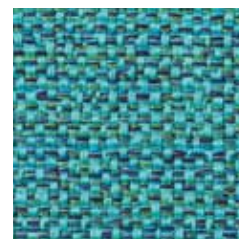
491 017-375



491 017-568



491 017-563



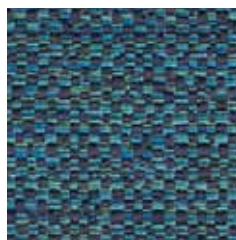
491 017-525



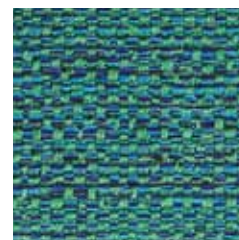
491 017-588



491 017-978



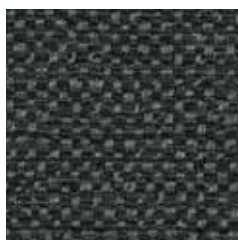
491 017-576



491 017-695



491 017-999



491 017-947



491 017-926



491 017-696

Design
Climatex

Farben - Colors - Colori - Couleur
32

Material - Composition - Composizione - Composition
69 % Cradura™, PA
18 % Certified Virgin Wool, WV
13 % Redesigned Lenzing FR™, CV FR

Nutzbreite - Nominal Width - Larghezza utilizzabile - Largeur utile
140 cm

Gewicht - Weight - Peso - Poids
470 g/lfm

Schallabsorbtion - Sound absorbtion - Assorbimento acustico - Absorption acoustique
α_w = 0,50

Scheuerfestigkeit - Abrasion resistance - Resistenza all'abrasione - Résistance à l'abrasion
500'000 Martindale, EN ISO 12947-2

Pilling - Résistance au boulochage
4 - 5, EN ISO 12945-2

Lichtechtheit - Light fastness - Solidità alla luce - Stabilité aux UV
6 - 7, EN ISO 105-B02

Reibechtheit - Fastness to rubbing - Resistenza allo sfregamento - Résistance au frottement
dry 4 - 5, wet 4 - 5, EN ISO 105-X12

Brandnormen - Fire standards - Norme antincendio - Normes incendie
EN 1021-1/2
BS 5852-0/1
IMO Resolution MSC 307 (88) Annex 1, Part 8
California TB 117, Class 1

Pflege - Care - Cura - Conseil d'entretien

