

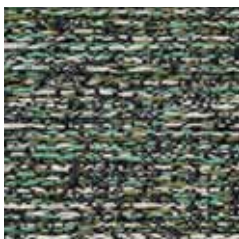


Kaori





## Kaori



491 036-588



491 036-581



491 036-126



491 036-936



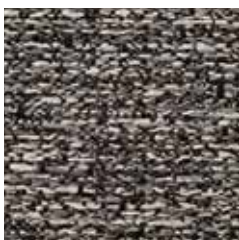
491 036-127



491 036-121



491 036-907



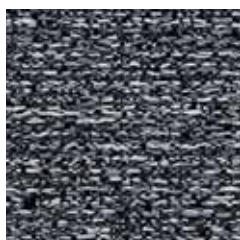
491 036-999



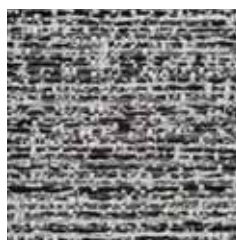
491 036-908



491 036-998



491 036-997



491 036-909

## Kaori



491 036-388



491 036-387



491 036-937



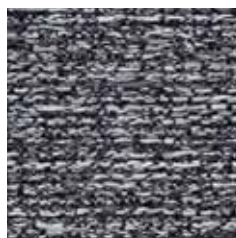
491 036-777



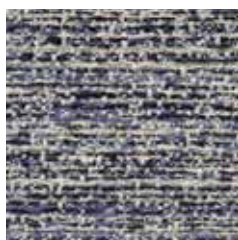
491 036-587



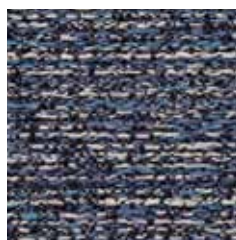
491 036-779



491 036-589



491 036-905



491 036-585



491 036-995

**Design**  
Climatex

**Farben - Colors - Colori - Couleur**  
22

**Material - Composition - Composizione - Composition**  
70 % Cradura™, PA  
17 % Certified Virgin Wool, WV  
13 % Redesigned Lenzing FR™, CV FR

**Nutzbreite - Nominal Width - Larghezza utilizzabile - Largeur utile**  
140 cm

**Gewicht - Weight - Peso - Poids**  
455 g/lfm

**Schallabsorbtion - Sound absorbtion - Assorbimento acustico - Absorption acoustique**  
αw= 0,55

**Scheuerfestigkeit - Abrasion resistance - Resistenza all'abrasione - Résistance à l'abrasion**  
100'000 Martindale, EN ISO 12947-2

**Pilling - Résistance au boulochage**  
4 - 5, EN ISO 12945-2

**Lichtechtheit - Light fastness - Solidità alla luce - Stabilité aux UV**  
6 - 7, EN ISO 105-B02

**Reibechtheit - Fastness to rubbing - Resistenza allo sfregamento - Résistance au frottement**  
dry 4 - 5, wet 4 - 5, EN ISO 105-X12

**Brandnormen - Fire standards - Norme antincendio - Normes incendie**  
EN 1021-1/2  
BS 5852-0/1  
IMO Resolution MSC 307 (88) Annex 1, Part 8  
California TB 117, Class 1

**Pflege - Care - Cura Conseil - d'entretien**

