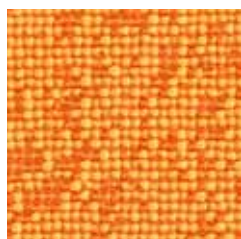




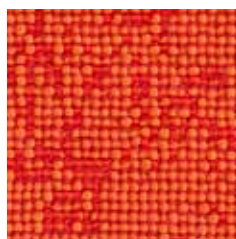
Grano



Grano



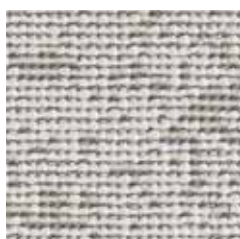
491 012-221



491 012-332



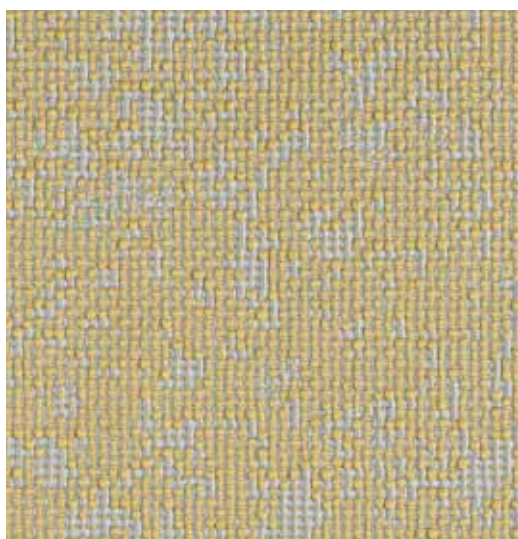
491 012-335



491 012-123



491 012-383



491 012-906

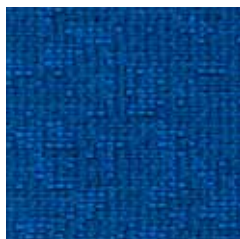


491 012-388



491 012-935

Grano



491 012-555



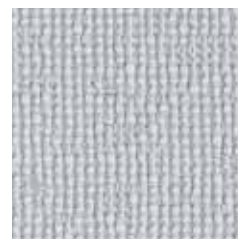
491 012-585



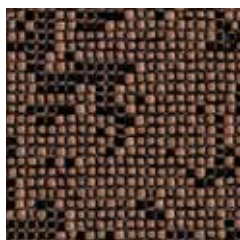
491 012-938



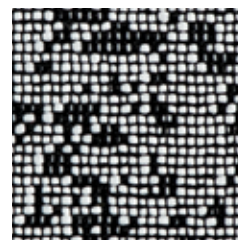
491 012-936



491 012-903



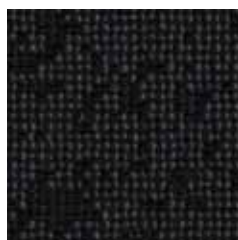
491 012-996



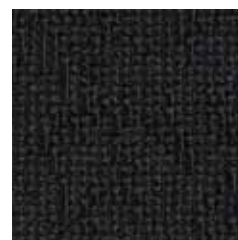
491 012-991



491 012-997



491 012-998



491 012-999

Grano

Design
Climatex

Farben - Colors - Colori - Couleur
18

Material - Composition - Composizione - Composition
69 % Cradura™, PA
18 % Certified Virgin Wool, WV
13 % Redesigned Lenzing FR™, CV FR

Nutzbreite - Nominal Width - Larghezza utilizzabile - Largeur utile
139 cm

Gewicht - Weight - Peso - Poids
450 g/lfm

Scheuerfestigkeit - Abrasion resistance - Resistenza all'abrasione - Résistance à l'abrasion
250'000 Martindale, EN ISO 12947-2

Pilling - Résistance au boulochage
4, EN ISO 12945-2

Lichtechtheit - Light fastness - Solidità alla luce - Stabilité aux UV
6, EN ISO 105-B02

Reibechtheit - Fastness to rubbing - Resistenza allo sfregamento - Résistance au frottement
dry 4 - 5, wet 4, EN ISO 105-X12

Brandnormen - Fire standards - Norme antincendio - Normes incendie
EN 1021-1/2
BS 5852-0/1
IMO Resolution MSC 307 (88) Annex 1, Part 8
California TB 117, Class 1

Pflege - Care Cura - Conseil d'entretien

