



Balani



Balani



481 028-136



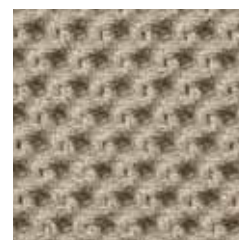
481 028-122



481 028-100



481 028-701



481 028-130



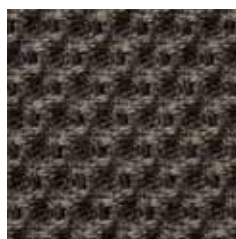
481 028-660



481 028-906



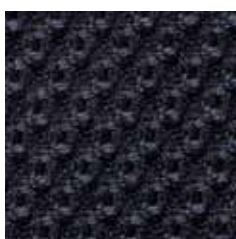
481 028-970



481 028-982



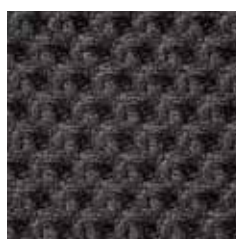
481 028-800



481 028-997



481 028-980



481 028-984



481 028-985

Balani



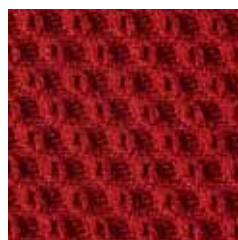
481 028-223



481 028-221



481 028-333



481 028-330



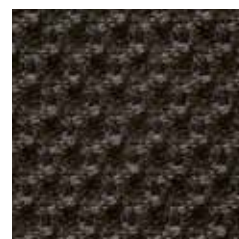
481 028-902



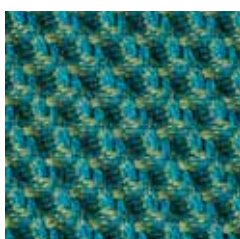
481 028-334



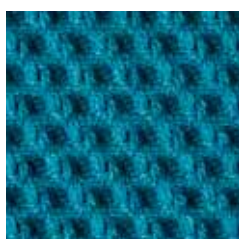
481 028-904



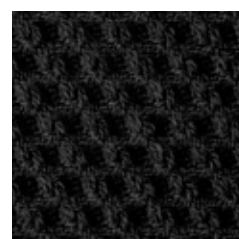
481 028-907



481 028-556



481 028-550



481 028-999

Balani

Design
Climatex

Farben - Colors - Colori - Couleur
25

Material - Composition - Composizione - Composition
55 % Certified Virgin Wool, WV
30 % Redesigned Lenzing FR™, CV FR
15 % PA

Nutzbreite - Nominal Width - Larghezza utilizzabile - Largeur utile
131 cm

Gewicht - Weight - Peso - Poids
633 g/lfm

Scheuerfestigkeit - Abrasion resistance - Resistenza all'abrasione - Résistance à l'abrasion
100'000 Martindale, EN ISO 12947-2
Pilling Résistance au boulochage
4 - 5, EN ISO 12945-2

Lichtechtheit - Light fastness - Solidità alla luce - Stabilité aux UV
5, EN ISO 105-B02

Reibechtheit - Fastness to rubbing - Resistenza allo sfregamento - Résistance au frottement
dry 4 - 5, wet 3 - 4, EN ISO 105-X12

Brandnormen - Fire standards - Norme antincendio - Normes incendie
EN 1021-1/2
BS 5852-0/1
BS 5852 P2, Crib 5
IMO Resolution MSC 307 (88) Annex 1, Part 8
UNI 8456, UNI 9174, Classe 1
California TB 117, Class 1

Pflege - Care - Cura - Conseil d'entretien

