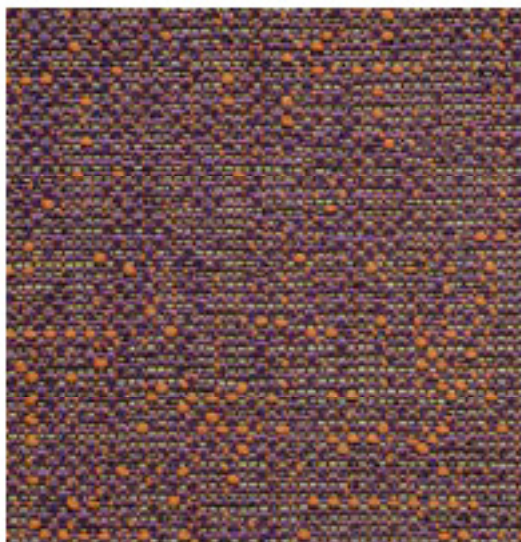


 **CLIMATEx**

Assam



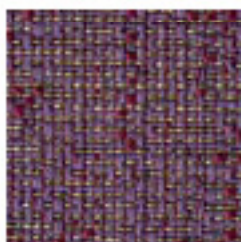
Assam



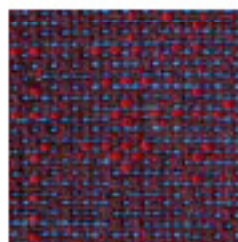
491 029-782



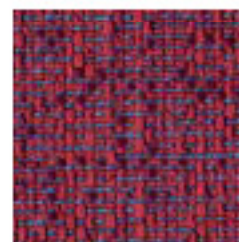
491 029-582



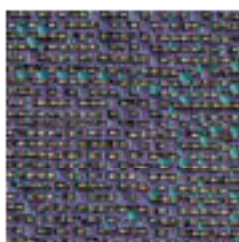
491 029-781



491 029-383



491 029-333



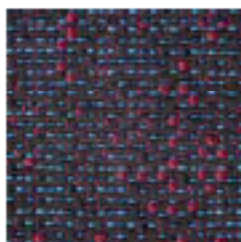
491 029-785



491 029-384

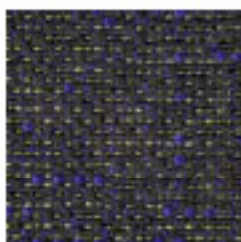


491 029-334

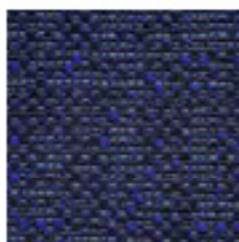


491 029-995

## Assam



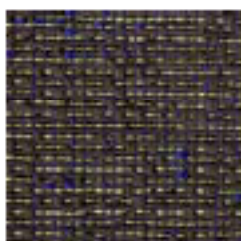
**491 029-596**



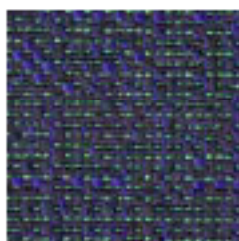
**491 029-586**



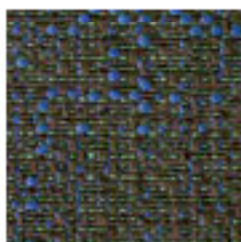
**491 029-584**



**491 029-778**



**491 029-587**



**491 029-775**



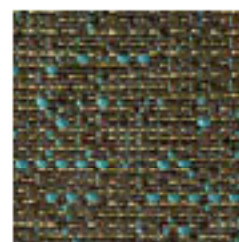
**491 029-777**



**491 029-597**



**491 029-586**



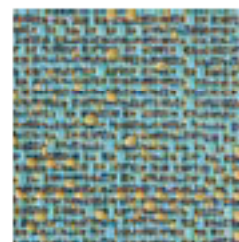
**491 029-776**



**491 029-599**

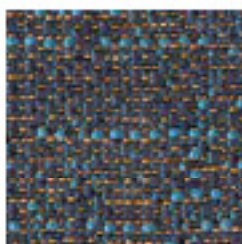


**491 029-598**



**491 029-521**

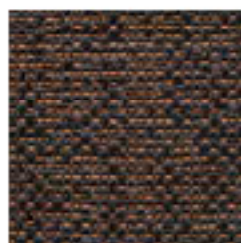
## Assam



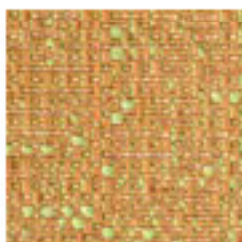
**491 029-585**



**491 029-993**



**491 029-992**



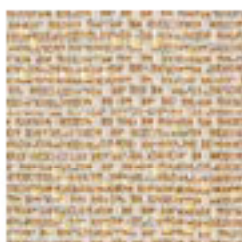
**491 029-222**



**491 029-223**



**491 029-126**



**491 029-122**



**491 029-128**



**491 029-121**



**491 029-111**

**Design**  
Climatex

**Farben – Colors – Colori – Couleur**  
32

**Material – Composition – Composizione – Composition**  
68 % Cradura™, PA  
19 % Certified Virgin Wool, WV  
13 % Redesigned Lenzing FR™, CV FR

**Nutzbreite – Nominal Width – Larghezza utilizzabile – Largeur utile**  
141 cm

**Gewicht – Weight – Peso – Poids**  
437 g/lfm

**Schallabsorption – Sound absorption – Assorbimento acustico – Absorption acoustique**  
 $\alpha_w = 0,55$

**Scheuerfestigkeit – Abrasion resistance – Resistenza all'abrasione – Résistance à l'abrasion**  
300'000 Martindale, EN ISO 12947-2

**Pilling – Résistance au boulochage**  
4 - 5, EN ISO 12945-2

**Lichtechtheit – Light fastness – Solidità alla luce – Stabilité aux UV**  
6, EN ISO 105-B02

**Reibechtheit – Fastness to rubbing – Resistenza allo sfregamento – Résistance au frottement**  
dry 4 - 5, wet 4 - 5, EN ISO 105-X12

**Brandnormen – Fire standards – Norme antincendio – Normes incendie**  
EN 1021-1/2  
BS 5852-0/1  
California TB 117, Class 1

**Pflege – Care – Cura – Conseil d'entretien**

