

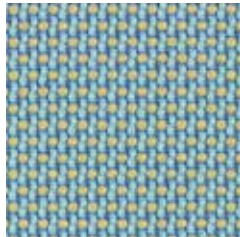
Neo

 climatex®



Neo

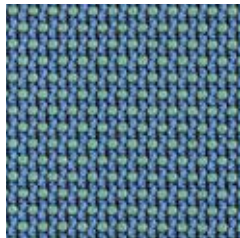
 climatex®



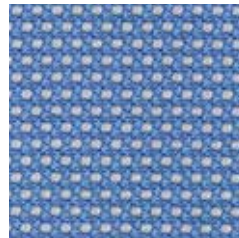
491 055-526



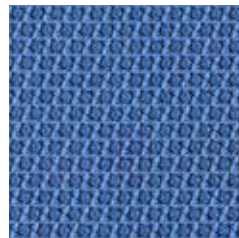
491 055-521



491 055-566



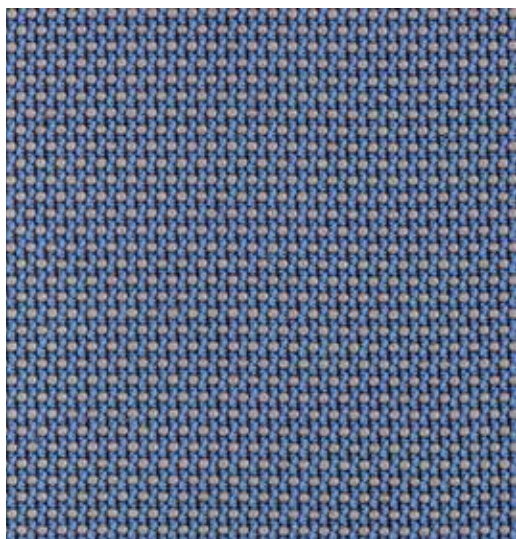
491 055-551



491 055-565



491 055-585



491 055-568



491 055-588



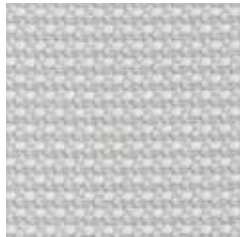
491 055-995



491 055-996

Neo

 climatex®



491 055-901



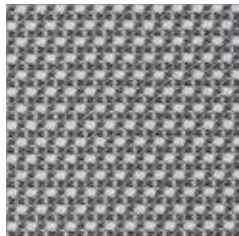
491 055-121



491 055-111



491 055-915



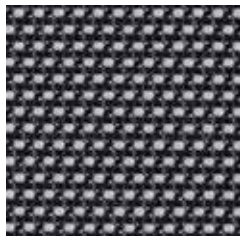
491 055-931



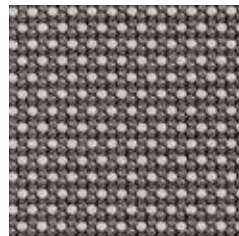
491 055-158



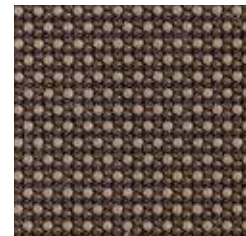
491 055-152



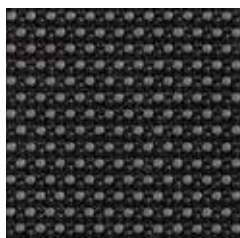
491 055-982



491 055-941



491 055-797



491 055-997



491 055-791



491 055-792



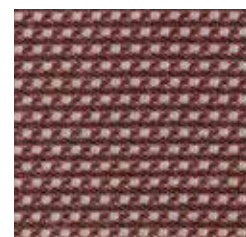
491 055-999



491 055-798



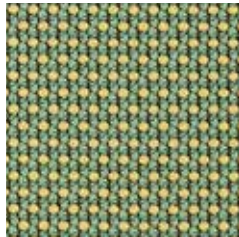
491 055-948



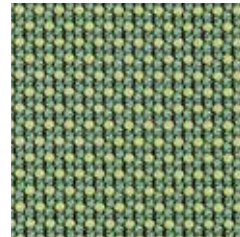
491 055-377

Neo

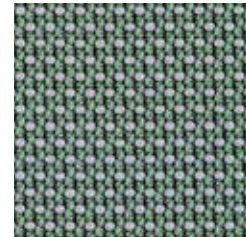
 climatex®



491 055-691



491 055-696



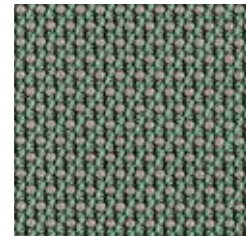
491 055-697



491 055-151



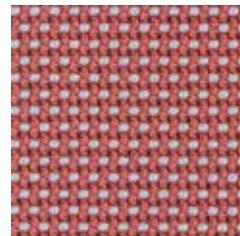
491 055-692



491 055-698



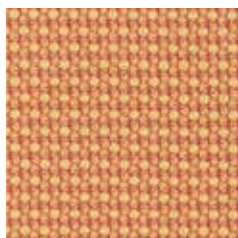
491 055-231



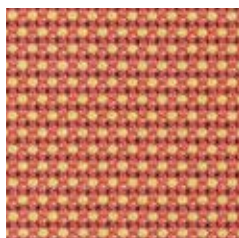
491 055-331



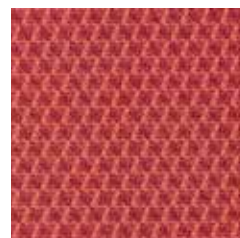
491 055-788



491 055-232



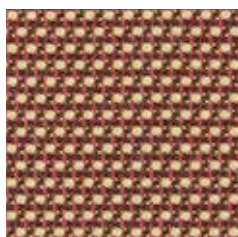
491 055-332



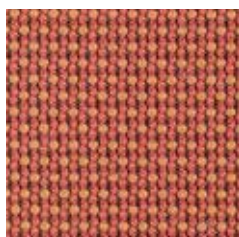
491 055-333



491 055-573



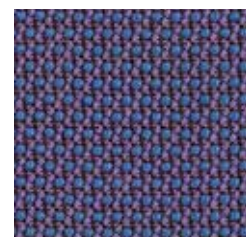
491 055-372



491 055-352



491 055-383



491 055-785

Neo

 climatex®

Design

Climatex

Farben – Colors – Colori – Couleur

44

Material – Composition – Composizione – Composition

72 % Cradura™, PA

16 % Certified Virgin Wool, WV

12 % Redesigned Lenzing FR™, CV FR

Nutzbreite – Nominal Width – Larghezza utilizzabile – Largeur utile

141 cm

Gewicht – Weight – Peso – Poids

410 g/lfm

Schallabsorption – Sound absorption – Assorbimento acustico – Absorption acoustique

$\alpha_w = 0,50$

Scheuerfestigkeit – Abrasion resistance – Resistenza all'abrasione – Résistance à l'abrasion

450'000 Martindale, EN ISO 12947-2

Pilling – Résistance au boulochage

5, EN ISO 12945-2

Lichtechtheit – Light fastness – Solidità alla luce – Stabilité aux UV

6, EN ISO 105-B02

Reibechtheit – Fastness to rubbing – Resistenza allo sfregamento – Résistance au frottement

dry 4 - 5, wet 4, EN ISO 105-X12

Brandnormen – Fire standards – Norme antincendio – Normes incendie

EN 1021-1/2

BS 5852-0/1

California TB 117, Class 1

Pflege – Care – Cura – Conseil d'entretien

