

Natura

 climatex®



Natura

 climatex®



491 017-198



491 017-192



491 017-152



491 017-118



491 017-134



491 017-124



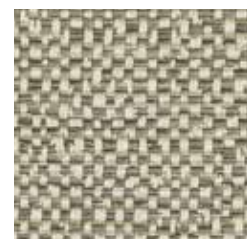
491 017-133



491 017-122



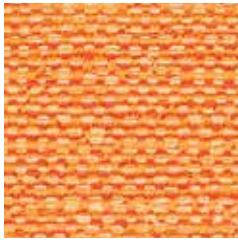
491 017-112



491 017-131

Natura

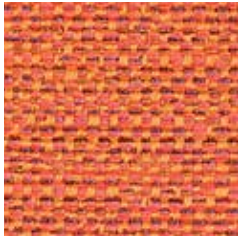
 climatex®



491 017-221



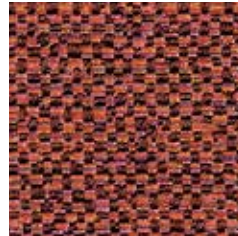
491 017-377



491 017-233



491 017-335



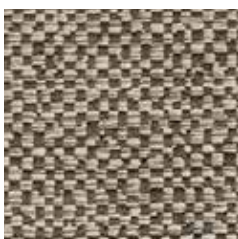
491 017-373



491 017-785



491 017-375



491 017-772



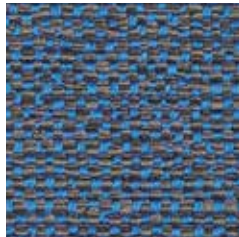
491 017-775



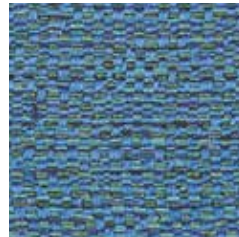
491 017-987

Natura

 climatex®



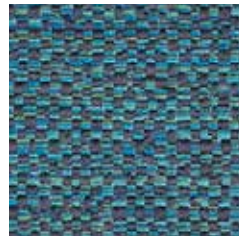
491 017-568



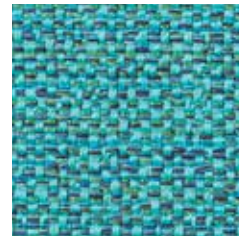
491 017-563



491 017-778



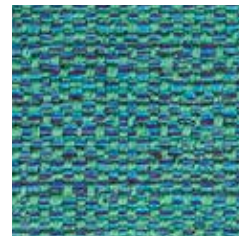
491 017-576



491 017-525



491 017-978



491 017-695



491 017-926



491 017-696



491 017-588



491 017-947



491 017-999

Natura

 climatex®

Design

Climatex

Farben – Colors – Colori – Couleur

32

Material – Composition – Composizione – Composition

69 % Cradura™, PA

18 % Certified Virgin Wool, WV

13 % Redesigned Lenzing FR™, CV FR

Nutzbreite – Nominal Width – Larghezza utilizzabile – Largeur utile

141 cm

Gewicht – Weight – Peso – Poids

455 g/lfm

Schallabsorption – Sound absorption – Assorbimento acustico – Absorption acoustique

$\alpha_w = 0,50$

Scheuerfestigkeit – Abrasion resistance – Resistenza all'abrasione – Résistance à l'abrasion

500'000 Martindale, EN ISO 12947-2

Pilling – Résistance au boulochage

4 - 5, EN ISO 12945-2

Lichtechtheit – Light fastness – Solidità alla luce – Stabilité aux UV

6 - 7, EN ISO 105-B02

Reibechtheit – Fastness to rubbing – Resistenza allo sfregamento – Résistance au frottement

dry 4 - 5, wet 4 - 5, EN ISO 105-X12

Brandnormen – Fire standards – Norme antincendio – Normes incendie

EN 1021-1/2

BS 5852-0/1

California TB 117, Class 1

Pflege – Care – Cura – Conseil d'entretien

